

THE JEWISH FEDERATION OF GREATER PITTSBURGH

BUILDING COMMUNITY FOR OVER 100 YEARS



2 0 1 3 A N N U A L R E P O R T

234 MCKEE PLACE, PITTSBURGH PA 15213 | 412.681.8000 WWW.JFEDPGH.ORG

The Vision of the Jewish Federation of Greater Pittsburgh is to have a thriving, vibrant, and engaged Jewish Community. In order to accomplish this we raise and allocate funds and build community locally, in Israel, and around the world.

The Jewish Federation of Greater Pittsburgh will be able to provide the most benefit to our community only if we are true to the following core values:

- We are guided by the teachings of Torah including: *tikkun olam* (repairing the world), *tzedakah* (justice), *chesed* (kindness) and *k'lal Yisrael* (peoplehood).
- We aim to sustain and meaningfully grow Jewish identity, leadership and involvement in our community.
- Our work will be carried out within the context of cooperation and inclusiveness.
- We recognize the importance of working in concert with others.
- We recognize the human dignity of every individual in the community.
- We care about building a strong community with purpose and involvement.
- We will establish priorities to accomplish our vision and mission.
- We value the beliefs and opinions of all members of our community.





REPORT

FROM LOUIS B. PLUNG AND JEFFREY H. FINKELSTEIN

Building community. It's something the Jewish People have been doing ever since we *became* the Jewish People. From the Twelve Tribes camping in the Sinai desert, to the shtetls of Eastern Europe, to the dynamic Jewish enclaves in modern American cities, we have always valued community and worked hard to ensure the well-being of our family, friends and neighbors.

We're still doing it today. And, here in Pittsburgh, we work together to do it in ways that are innovative, collaborative and noteworthy.

We pioneered J'Burgh, an award-winning program of the Edward and Rose Berman Hillel Jewish University Center that is helping to build a vibrant young adult community. We created a national model in AgeWell Pittsburgh, a collaboration between the Jewish Association on Aging, Jewish Community Center and Jewish Family & Children's Service that helps keep our aging community safe and healthy. Our Partnership2Gether project achieved international recognition this year for helping to strengthen the global Jewish community. And our Community Relations Council received its national organization's most prestigious award for building community *beyond* the Jewish community.

And this year we laid the ground work for several more exciting community building initiatives that will impact us many decades into the future.

Building community is largely about building on past successes - taking what works and expanding it, learning from and collaborating with others who are succeeding. But none of this can happen without adequate resources. And here, too, Pittsburgh shines.

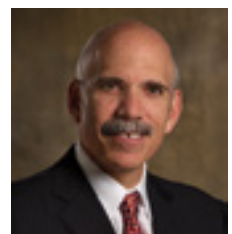
This year, thanks to your generosity, the Jewish Federation of Greater Pittsburgh raised well over \$30 million. Our record-breaking Annual Campaign, reaching its goal of \$13.35 million... a generous \$900,000 block grant from the Jewish Healthcare Foundation to address local health needs... more than

\$14 million raised for the Federation's Jewish Community Foundation... an unparalleled \$3.6 million raised through the Pennsylvania Educational Improvement Tax Credit program. All this and more - from private donors, corporations, and government and private foundations - has enabled us to make significant strides in building and strengthening our Jewish community.

Even more remarkable than the concrete facts and figures, however, is what they represent. We are seeing unprecedented involvement by young adults - record attendance at programs and events, nearly half-a-million dollars contributed to the 2013 Annual Campaign, and participation in intensive leadership development programs locally and on the national level. These are the signs of a bright future for our community, in the capable hands of the next generation. A future marked by continued generosity, vision and passionate leadership.

Building community. It is a job that never ends, as communities must grow and transform as needs - and times - change. Our founders took up the tools more than 100 years ago and laid the cornerstone. This year has been one of continued building, as we rise to new challenges and seize new opportunities. With your continued support, your involvement, your hard work, we will continue to build - today, tomorrow and for generations to come.

Louis B. Plung
Chair of the Board



Jeffrey H. Finkelstein
President & CEO



FEDERATION LEADERSHIP

JEWISH FEDERATION LEADERSHIP

OFFICERS OF THE FEDERATION

Louis B. Plung, Chair of the Board
Eileen L. Lane, Vice Chair
Douglas Ostrow, Vice Chair
Cynthia D. Shapira, Vice Chair
James P. Wagner, Secretary
Edgar Snyder, Assistant Secretary
Meryl K. Ainsman, Treasurer
Ellen P. Kessler, Assistant Treasurer

CENTRAL SERVICES

Douglas Ostrow, Chair

Audit Committee

Charles Porter, Chair

Finance Committee

Andrew Stewart, Chair

Foundation Investment Committee

Geoffrey Gerber, Ph.D., Chair

COMMUNITY BUILDING & FUNDING

Eileen L. Lane, Chair

Planning & Funding Committee

Meryl K. Ainsman, Chair

Israel and World Jewry

Steve Latterman, Chair
Scott Tobe, Co-Chair
Laurie Moser, Overseas Funding Chair
Joshua Resnick, Overseas Funding
Co-Chair
Jan Levinson, Co-Chair,
Partnership2Gether
Cindy Goodman-Leib, Co-Chair,
Partnership2Gether
Jennifer Olbum, Programming Chair,
Yom Ha'atzmaut

Jewish Community Life

Susan G. Berman, Chair

Jewish Learning

Cheryl Moore, Chair

Ageing & Human Needs

Carole Miner Schuman, Chair

Volunteer Center

Judi Kanal, Chair

Community Relations Council

Skip Grinberg, Chair

Foundation Grantmaking Committee

William C. Rudolph, Chair

Government Affairs

David Burstin, Chair

Health Care

Stephen F. Halpern, Chair

Holocaust Center Commission

Hilary Tyson, Chair
Moshe Baran, President, Holocaust
Survivors Organization

JFilm: The Pittsburgh Jewish Film Forum

Sally Kalson, Co-Chair

Local and National Agencies

Ilene Fingeret, Chair

DEVELOPMENT

Cynthia D. Shapira, Chair

Foundation

William C. Rudolph, Chair

Annual Campaign

James P. Wagner, Chair
David Sufrin, Co-Chair and Major
Donors Chair

Pacesetters

Ellen P. Kessler, Chair
Peter Gordon, Co-Chair
Mark Ackerman, Team Captain
Sanford Ehrenreich, Team Captain
Myrna Klein, Team Captain
Elaine Krasik, Team Captain
Scott Leib, Team Captain
Jan Levinson, Team Captain
Bryan Neft, Team Captain
Nancy Rackoff, Team Captain
James F. Reich, Team Captain
Jerome L. Rosenberg, Team Captain
Charles H. Saul, Team Captain
David W. Steinbach, Team Captain

Community

Maureen Kelly Busis, Chair
Alicia Klein, Co-Chair

Women's Philanthropy

Lori Shure, Chair
Linda Joshowitz, Campaign Chair
Ellen Teri Kaplan Goldstein, Campaign
Co-Chair
Cheryl Moore, Lion of Judah Co-Chair
Lori Guttman, Lion of Judah Co-Chair
Hilary Tyson, Lion of Judah Endowment
Chair
Gail Childs, Pomegranate Co-Chair
Deborah Breslof, Pomegranate Co-
Chair
Mina Kavaler, Community Co-Chair
Ronit Wiesenfeld, Community Co-Chair
Lynn Farber, Young Women's Chair
Julie Silverman, Young Women's Co-
Chair

Young Adult Division

Matthew A. Keller, M.D., Chair
Zack Block, Campaign Chair
William Z. Spatz, Campaign Co-Chair
David Grubman, National Young
Leadership Cabinet Chair
Kristen Keller, Leadership Development
Co-Chair
Randy Whitlatch, Leadership
Development Co-Chair
Catia Kossovsky, Shalom Pittsburgh
Co-Chair
Kira Sunshine, Shalom Pittsburgh Co-
Chair

Cardozo Society

Bryan Neft, Esq., Co-Chair

Maimonides Society

William Z. Spatz, Chair

Marketing Communications Committee

Evan Indianer, Chair

Florida East Coast Snowbirds

Jack Bergstein, Co-Chair
Nancy Berkowitz, Co-Chair

JEWISH FEDERATION STAFF

Jeffrey H. Finkelstein, President & CEO
Tracy Grandelis, Assistant to the President

CENTRAL SERVICES

Milo Averbach, Chief Financial Officer

Accounting

Tracy Gressang, Controller
Jenny Kaplan, Senior Financial Analyst
Hollie Dzanaj, Financial Manager
Erin L. Wyland, Accounting Associate
Aleta Jensen, Accounting Associate

Building Operations

Pat Calabro, Director, Support Services
Rob Dziekan, Maintenance Staff
Sharon Edge, Maintenance Staff
Darrell McDonald, Maintenance Staff

Technology

Bob Ellsworth, Director, Information Technology
Stephanie Williams, User Support

COMMUNITY BUILDING & FUNDING

Deborah A. Baron, Chief Operating Officer

Community Building

Robert Antonelli, Director, Government Relations
Joshua Donner, Director, Planning
Jenny Jones, Volunteer Center Coordinator
Susan Linzer, Associate Director of Planning/Director, Overseas Operations
Ilene Rinn, Manager, Human Services Planning and Allocations

Gregg Roman, Director, Community Relations Council

Raimy Rubin, Manager, Community Scorecard

Jessie Svec, Program Associate, Volunteer Center

Debbie Swartz, Overseas Planning Associate

Chris Levicky, Administrative Assistant

Eric Probola, Administrative Assistant

Christina Sahovey, Administrative Assistant

Holocaust Center

Joy Braunstein, Director

Samantha Chilton, Senior Associate

Jennie Pelled, Development/

Programming Associate

Rachel Herman, Holocaust Education Fellow

Zac Zafris, Education and Administrative Fellow

JFilm: The Pittsburgh Jewish Film Forum

Kathryn Spitz Cohan, Director

Rachel Colker, Assistant Director

Courtney Strauss, Young Adult/Teen Outreach Coordinator

Lori Sisson, Administrative Assistant

DEVELOPMENT

Brian S. Eglash, Senior Vice President and Chief Development Officer

Jessica Brown Smith, Director, Campaign and Financial Resource Development

Annual Campaign

Emily Richman, Assistant Campaign Director

Rachael Altoff, Director, Young Adult Division

Amy Cohen, Shalom Pittsburgh Coordinator

Evan Durst, Development Associate
Rebecca Hurowitz, Director, Women's Philanthropy

Roi Mezare, Senior Manager, Financial Resource Development

Yvonne Novick, Database Manager

Rebecca Sable, Event Planner

Bradley Stamm, Campaign Associate
Sally B. Stein, Manager, Corporate and Government Relations

David Guzikowski, Administrative Assistant

Meryl Lotz, Administrative Assistant

Christa Maier, Administrative Assistant

Jessica McClelland, Data Management Specialist

Jessica Meyer, Administrative Assistant

Foundation

Daniel Brandeis, Esq., Director

Sharon Perelman, Esq., Associate Director

Patti Dziekan, Administrative Assistant

Patti Flister, Administrative Assistant

Marketing Communications

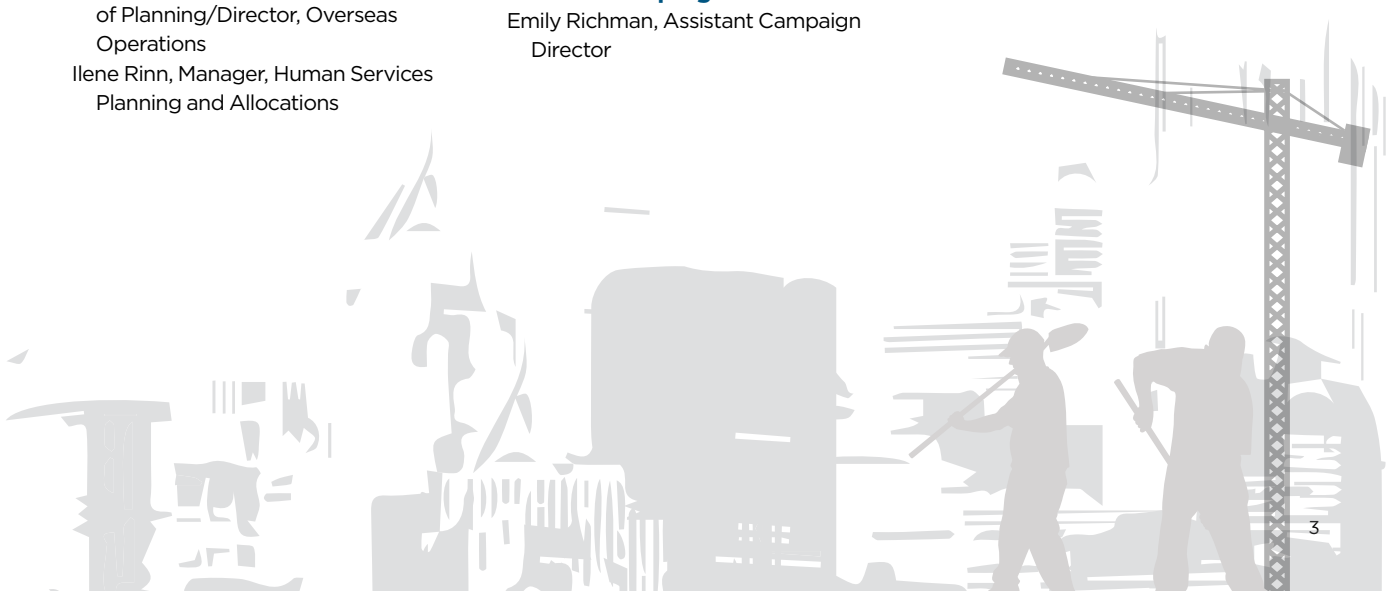
Ellen Roteman, Director

Shimon Zimbovsky, Marketing Associate

Quito Ollero, Graphic Designer

Heather Vallone, Web Administrator

Marilyn Navish-McCullough, Administrative Assistant



THE COMMUNITY WE SERVE

The Jewish Federation engages a broad cross section of community members in raising and distributing funds. By bringing a wealth of viewpoints and expertise to these efforts, we work to ensure that the programs and institutions that enrich our Jewish community remain vibrant and strong. The Jewish Federation is the largest Jewish grant-making organization in our community, helping people at home, in Israel, and around the world. The Federation's Annual Campaign and Jewish Community Foundation embody the values and traditions of our Jewish community. It says that we — as a community — address critical needs today and position ourselves to meet changing needs in the future.

Federation fundraising addresses the following priorities:



Aging and Human Needs

More seniors will receive medical, dental and community-based social services thanks to a new partnership forged this year between AgeWell Pittsburgh, our community's effort to keep older adults independent, and the Squirrel Hill Health Center.



Strengthening Jewish Community

More than 1,000 children now receive free Jewish books each month through PJ Library, bringing Jewish content and values into the homes of young families. Special programming developed around the books' themes enhance learning and fun.



Israel and World Jewry

Our overseas work ranges from providing supplemental food and health care services to vulnerable Jews in the former Soviet Union, to strengthening the global Jewish community — and Jewish identities — by involving our youth in educational trips to Israel.



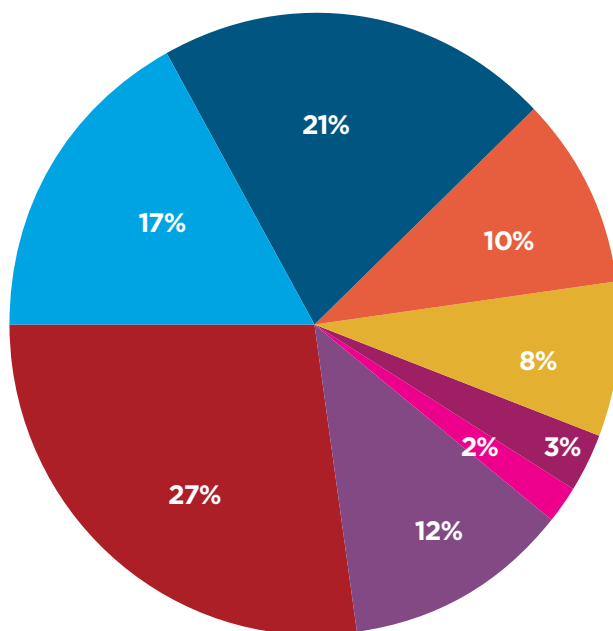
Jewish Learning

Federation dollars support all kinds of Jewish learning — from formal sessions in a Hebrew School classroom, to interactive learning, to an immersive experience at an overnight Jewish summer camp.

COMMUNITY IMPACT

- Grantmaking - Overseas Funding
- Grantmaking - Jewish Learning
- Custodial Grantmaking*

- Grantmaking - Aging & Human Needs
- Grantmaking - Jewish Community Life
- Grantmaking - Israel Travel & Local Israel Programming
- Grantmaking - National Agencies
- Community Programs, Agency Supports



* Grants from Foundation funds for causes at direction of agencies and fund holders.

Some agencies and programs funded through the Annual Campaign:

AGING AND HUMAN NEEDS

- AgeWell Pittsburgh
- The Aleph Institute
- Friendship Circle
- Jewish Assistance Fund
- Jewish Association on Aging*
 - Charles Morris Nursing and Rehabilitation Center
- Jewish Family & Children's Service*
 - Career Development Center of JF&CS
 - Central Scholarship and Loan Referral Service, a program of the Jewish Federation
 - Squirrel Hill Community Food Pantry
 - SOS Pittsburgh
- Jewish Residential Services*
 - Howard Levin Clubhouse
- Riverview Towers*
- Squirrel Hill Health Center

STRENGTHENING JEWISH COMMUNITY

- Edward and Rose Berman Hillel Jewish University Center*
 - J'burgh
- Community Relations Council of the Jewish Federation of Greater Pittsburgh
- Holocaust Center of the Jewish Federation of Greater Pittsburgh
- Jewish Cemetery and Burial Association

- Jewish Community Center of Greater Pittsburgh*
 - James & Rachel Levinson Day Camp
 - Emma Kaufmann Camp
- Jewish Federation of Greater Pittsburgh Volunteer Center
- JFilm: The Pittsburgh Jewish Film Forum
- PJ Library
- Teen Initiative of the Jewish Federation

ISRAEL AND WORLD JEWRY

- American Jewish Joint Distribution Committee
- Birthright Israel & MASA
- Jewish Federation Israel Scholarship Program
- Jewish Agency for Israel
- Partnership2Gether

JEWISH LEARNING

- Agency for Jewish Learning*
 - J-Site
- Community Day School*
- Federation Educational Enrichment Fund
 - (Supporting 17 synagogue religious schools)
- Hillel Academy of Pittsburgh*
- Kollel Jewish Learning Center
- Yeshiva Schools*

* Beneficiary Agency of the Jewish Federation of Greater Pittsburgh

HIGHLIGHTS

FINANCIAL RESOURCE DEVELOPMENT - BY THE NUMBERS

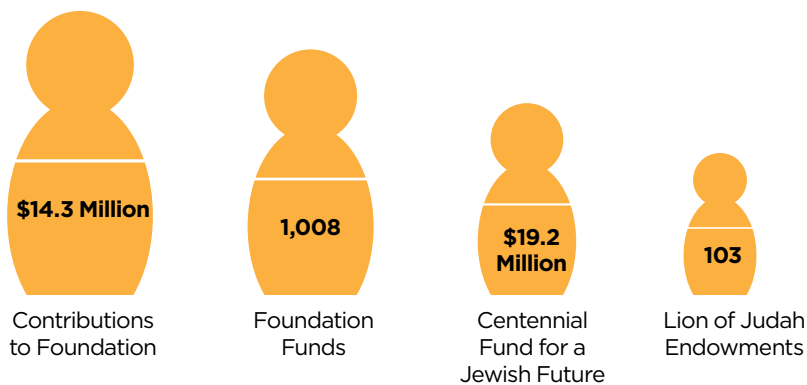
THE JEWISH FEDERATION IS YOUR CENTER FOR JEWISH PHILANTHROPY



JEWISH FEDERATION ANNUAL CAMPAIGN TO SUPPORT NEEDS IN COMMUNITY



JEWISH COMMUNITY FOUNDATION



COMMUNITY BUILDING

The Federation has a 100-year history of investing in Jewish communal needs across Pittsburgh. By providing essential operating funding, leading community-wide planning efforts, fostering partnerships, and supporting best business practices, the Federation works to ensure that a network of high-quality agencies and programs are in place to meet the challenging and changing needs of the greater Pittsburgh community.

Through its development efforts, encompassing the Annual Campaign, the Jewish Community Foundation and various other means of raising funds, the Federation supports a vast range of community programs and services.

Below are some highlights of the many ways the Federation made a difference in the last year.



CRC: COLLABORATION BUILDS RELATIONSHIPS, LEADS TO AWARD

The Community Relations Council (CRC) adopted a new strategic plan, appointed a new steering committee and launched the Jewish Delegates Assembly of Greater Pittsburgh this year. Additional accomplishments included successfully lobbying for passage of two key pieces of legislation in Pennsylvania (regarding Holocaust education and a “nuclear free Iran”); hosting three high-level diplomatic delegations of Israeli consular and trade officials in Pittsburgh; and leading local and state representatives on a trade delegation to Israel.

Among CRC’s special programs this year were a rally in support of Israel after Operation Pillar of Defense that drew 700 people, and a city-wide discussion on the impact of the Fiscal Cliff on local non-profit organizations. CRC also facilitated 12 editorial board meetings, media events and appearances in local, regional, national and international forums, as well as a variety of programs with local and national organizations focused on Jewish public policy interests.

The CRC was the recipient of the Jewish Council for Public Affairs National Award for Programmatic Excellence in recognition of its collaborative series of town hall meetings and cultural events in partnership with the August Wilson Center.



HOLOCAUST CENTER LOOKS BACK ON 30 YEARS, SERVES THOUSANDS TODAY

The Holocaust Center honored the survivor community by issuing a commemorative 30th Anniversary Book profiling local Holocaust survivors and holding a launch party for its Holocaust Survivor Testimony Project two-DVD set. In partnership with the August Wilson Center for African American Culture, the Center brought the “Nazi Olympics, Berlin 1936” exhibition to nearly 10,000 people. Major community events on Kristallnacht and Yom Hashoa each drew a full house. Young audiences were engaged via new programs like Meet the Artist (in partnership with Shalom Pittsburgh and J’Burgh/The Edward and Rose Berman Hillel Jewish University Center); the expanded Remembering the Children: Holocaust Twinning Program, which now involves B’nai Mitzvah youth in genealogical

research; and The Waldman International Arts & Writing Competition, which reaches out to youth in our Partnership2Gether community in Karmiel-Misgav.



VOLUNTEER CENTER OFFERS OPPORTUNITIES TO LIVE GENEROUSLY

Launched in 2012, the Jewish Federation Volunteer Center has already engaged more than 1,600 volunteers with over 250 volunteer opportunities in Pittsburgh and Israel! In a special mission coordinated by the Center, a team of Pittsburgh volunteers traveled to Israel to help in community gardens and support programs for the disadvantaged. In Pittsburgh, the Center launched unique new local programs: VOOM! and Follow the Reader. VOOM! features monthly volunteer opportunities and encourages individuals and groups to get involved with new activities and organizations. Follow the Reader is a monthly enrichment program that takes volunteers into preschools to read to children. The Volunteer Center helped 600 volunteers participate in Good Deeds Day and collaborated with United Way to bring mentors to children and visitors to elders. Throughout the year, the Center helped volunteers experience the value of living generously.



P2G WINS JAFI AWARD, CONNECTS PITTSBURGH WITH KARMIEL-MISGAV

The Jewish Agency for Israel (JAFI) presented its Award of Excellence to Pittsburgh's Partnership2Gether (P2G) program in recognition of P2G's 2012 Welcome Home project, which enabled 290 Pittsburghers to

travel to visit Pittsburgh's "sister" communities, Karmiel and Misgav. Among other highlights of the year: P2G brought Karmiel-Misgav youth to Pittsburgh to perform in Yom Ha'atzmaut celebrations and be part of a Basketball Delegation that forged bonds with host families and local athletes.

EXPERIENTIAL LEARNING IS THE KEYSTONE IN CWB OFFERINGS

Classrooms Without Borders (CWB) launched several new projects in pursuit of its mission to provide experiential education, including a new Israeli studies program at The Ellis School, Pittsburgh. For the first time CWB sent teachers to Berlin and Prague for "immersion" professional development. Students who had traveled to Poland for CWB's Poland Study Seminar shared seminar impacts at the Urban Pathways Charter School, Pittsburgh. Teens at CWB partner schools raised funds to help the charter school students visit the U.S. Holocaust Memorial Museum. Guided by CWB materials, more than 400 teachers and students saw and discussed the play *Our Class*, about Holocaust atrocities. Among other distinguished presenters, CWB featured author-poet Magda Herzbeiger, a senior member of the German Parliament, and Holocaust survivors.



IN ITS 20TH YEAR, JFILM BRINGS WORLD-CLASS FILMS TO THOUSANDS

The program of JFilm: The Pittsburgh Jewish Film Forum reached over 10,300 people through a rich offering of films and special events that explored and celebrated Jewish life and culture. This year's 20th annual JFilm Festival attracted 3,700 viewers for 18 films that ran throughout the 10-day festival. Over 4,000 students and teachers participated in JFilm's Teen Screen program and other teens joined seniors residing in assisted living to view and discuss films together in the Reel to Real program. Young adults engaged in film viewing and socializing through the Red String film program and the annual Robinson International Short Film Competition awarded cash prizes to several promising filmmakers. Through these programs and more, Pittsburgh audiences were educated, entertained and connected through film.

COMMUNITY SCORECARD

THE JEWISH FUTURE IS BRIGHT IN PITTSBURGH AND WE'RE SETTING OUT TO MAKE IT EVEN BRIGHTER

By imagining what our community could be and envisioning all we want it to be, we can chart a path for getting there. This year, the Federation has joined local synagogues and Jewish organizations to develop a mechanism for assessing the programs that work and identifying and implementing new approaches that may better serve our diverse needs. The Pittsburgh Jewish Community Scorecard will guide us in a dynamic and evolutionary process.



The Scorecard is an online tool that offers access and data about our performance as a community. Using your input, we will measure our successes so far and gauge the impact we have made. By working together, we will identify our strengths and weaknesses across the community, consider what is missing and how to fill in the gaps.



The Scorecard will make community performance more visible to the general Jewish public in Pittsburgh and provide information that will help improve communal decision-making.



We will ask you what you think. You can tell us about your experiences in the community and what you'd like to see in the future. You will help us define our ideal Jewish community.

Each time we make changes, we will once again measure impact to see whether we are on the right track. If there is improvement, we will keep going. If not, we will try another innovation or a new approach.



Along the way, we will report back to the community, discussing our progress and improvements, creating more transparency, greater accountability and better services. Because if you can't measure, you can't improve.



HONOR ROLL

The 2013 Annual Campaign raised a record \$13.35 million to support programs and institutions that enrich Jewish life here, in Israel, and around the world.

Building upon the tremendous outpouring of support from this amazing community, people in need have received the help they deserve, ensuring that our Jewish community continues to be nurtured and sustained today and for future generations.

YOU HAVE MADE A WORLD OF DIFFERENCE.

\$100,000+

Anonymous (2)
BNY Mellon
Bernita Buncher
Dr. Barbara & Mr. David Burstin
Sheila & Milton Fine
The Howard S. Guttman Family
Halpern Foundation
Beverly, Lee & Roslyn Hurwitz
Marstine Family Foundation: Sheldon & Janet Marstine
The Charles M. Morris Charitable Trust - Distribution Committee:
Arthur G. Fidel, Esq. (z"l)
Charles S. Perlow, Esq.
William C. Rudolph
PNC Bank NA
Nancy & Woody Ostrow
Lynn (z"l) & Jerry Ostrow
Perlow & Rudolph Families
Plung & Resnick Families
Edgar & Sandy Snyder
Shelly & Dan Snyder
Samuel, Fannie & Irwin A. Solow Endowment Fund
Lawrence & Rebecca Stern Family Foundation
The Wolf Family

\$50,000-\$99,999

Anonymous (3)
Amdursky Family Memorial Fund
Marcy Lynn Bernstein Charitable Foundation
Tom & Karen Bernstein
Michael & Amy Bernstein
Todd & Stephanie Bernstein
Busis Family
Sidney & Sylvia Busis
Neil A. Busis
James & Maureen Kelly Busis
Philip Chosky Foundation
Elias Family
Sylvia & Norman Elias
Richard Elias
Andrea Elias

The Foster Charitable Trust
Mr. & Mrs. Bernard S. Mars
Mr. & Mrs. Lee B. Foster
Mr. & Mrs. Peter F. Mars
Ms. Penny Foster
General Wire Spring Co.
Ted & Carol Goldberg
Bernard & Marsha Marcus
Janie & Edward Moravitz
Perry (z"l) & BeeJee Morrison
Stuart Nord
Daniel & Barbara Shapira
Jeremy Shapira & David Gilinsky
Marlene & Art Silverman
Marianne & Adolph Sufrin Family
David Sufrin
Wagner Agency, Inc.
James P. Wagner
Reid D. Wagner
Dennis F. Lewandowski
Richard L. Wagner
Norton J. Freedel
Arnold N. Wagner

\$25,000-\$49,999

Anonymous (8)
Ed & Rose Berman
Dr. Saul & Maude Boharas Endowment Fund
Barbara & Jerry Chait
Ethel Comay
Allen J. Cousin
Bob & Gene Dickman
Sarita & Milton Eisner
Sheila Fine
James Alan & Ruth Frank
Doris & Neil Gillman Family Foundation
Goldstock Jewelers
Saul (z"l) & Shirley Kurtz
Michael & Susan Kurtz
Ira H. Gordon Family
Irv & Aaronel deRoy Gruber (z"l)
Lawrence & Ina Gumberg Foundation
Lester A. Hamburg Foundation, Farrell Rubenstein, Trustee
Sy Holzer

Hyman Family Foundation
Jewish Community Foundation
Campaign Endowment Fund
Joshiwicz Family
Yetta Joshowitz
James & Linda Joshowitz
Steve & Rose Joshowitz
Hannah & Marvin Kamin
Richard E. & Barbara Kann & Family
Ellen P. & Jack Kessler
Kathy & Cary Klein
The Latterman Family
Earl & Marilyn Latterman
Steven & Dr. Leslie Latterman
Lewis/Mason Family
Susie & Tom Lippard
Charles Porter & Hilary Tyson
Bill & Nancy Rackoff
Donald & Sylvia Robinson Foundation
The Sanford N. & Judith Robinson Family Foundation
The Rosenberg Family - Jerry, Paul & Howie
Nancy & Farrell Rubenstein
Stanley & Judy Ruskin
Leonard & Joan Scheinholtz
Charles Snyder
Judy M. & Joseph M. Sufrin
UPMC
Jacquelin G. Wechsler
Marilyn & Norman Weizenbaum

\$18,000-\$24,999

Carol & Gary Cozen
Jeffrey & Jennifer Finkelstein
Dr. Ellen Frank & Dr. David Kupfer
Essie & Harold Garfinkel
Geoffrey & Laurie Gerber
Sharon & Jim Goldberg
Gerri Kay
Stefi Kirschner & Gil Schneider
Elaine B. & Carl Krasik
Sam Michaels
Monroe Guttmann Endowment Fund
Dr. & Mrs. Louis Nichamin
Shoshana & Jerry Rosenberg

Bob & Lori Shure
Leonard D. Silk
Paul & Laurie Singer
Irving Spolan Endowment Fund
Harvey & Florence Zeve

\$10,000-\$17,999

Anonymous (18)
3 Rivers Ice Cream/Freed Family
Barbara & Otto Abraham
Alan L. & Barbara B. Ackerman
Harry & Carol Adelsheimer
Meryl & David Ainsman
Mr. & Mrs. Bruce A. Americus
Doris S. Balter Endowment Fund
Ahmie & Sara Baum
Meyer & Merle Berger Family Foundation
Michael & Sherle Berger
Drs. Peter & Susan Smerd
Jack Bergstein
Nancy & Bill Berkowitz
Sanford S. & Patricia G. Berman
Drs. Susan Berman & Douglas Kress
Mrs. Max Bluestone
David & Nancy Brent
The Brody Family Charitable Trust
David & Roberta Brody
James & Susan Brown
Marc & Betsy Brown
Dr. & Mrs. Adam Brufsky
Citizens Bank Foundation
Susan/Alan Citron
Ann & Martin Davis
Stanford & Marian Davis
Tibey & Julian Falk
Jack, Karen, Hillary & Max Friedman
The Cindy & Murry Gerber Foundation
Arlyn Gilboa
Esther & Stuart Glasser
Stephen A. Glickman & Linda Shensa
Ellen Teri Kaplan Goldstein & Michael
Goldstein
Peter & Robin Gordon
Richard & Dana Green
David & Amelia Grubman
Marcia M. Gumberg
Barney & Susan Guttman
Huntington Bank
Blair & Lynne Jacobson
David & Susan Friedberg Kalson
Dr. & Mrs. Emanuel Kanal
Seymoure & Corinne Krause
Jeremy Z. & Rebecca B. Kronman
Louis & Sandy Kushner
Susan Oberg Lane
Mr. & Mrs. Darrell H. Lazarus
Florence Leebov
Sally & Fred Lehman
Patty & Stanley Levine
Stanley Levine & Barbara Weschler
Jan & Margaretha Levinson
Anne Lewis
Roslyn M. Litman

Adrienne H. & Herbert J. Mallet
Robert & Toni Mallet
Jeffrey Markel & Carol Robinson
Dr. Stan Marks
Jack A. & Bernice E. Meyers
Anne M. Molloy & Henry Posner III
Joy Moravitz
Stanley & Flo Mae Moravitz (z"l)
Tracey & Ben Moravitz
Janet & Donald Moritz
Netzer Family
Casey & Marilyn Neuman
Mr. & Mrs. Marc Olin
Richard & Suzanne Paul
Bruce S. Rabin & Estelle F. Comay
Todd E. Reidbord
Mr. & Mrs. Lawrence Rich
Larry & Sandy Rosen
Ronald C. Rosen
Leonard H. & Doris G. Rudolph PACE
Endowment Fund
The Ruttenberg Family
Brian & Suzanne Schreiber
Edie Shapira & Mark Schmidhofer
Marjorie K. Silverman
Marlene & Art Silverman
Violet Soffer & Family
Arthur B. & Florita Sonnenklar
Jeffrey W. Spear
Alexander C. Speyer, III, Trustee
Alexander C. & Tillie S. Speyer
Foundation
Carol Steinbach
Stein Rich Family Foundation
Andrew Stewart & Carole Bailey
Scott & Becca Tobe
Stephen Tobe
Trau & Loevner
Jacklyn Wagner
Rocky Wein
Morris & Claire Weinbaum
Robert & Susan Weis
Randy & Katie Whitlatch
Willis

\$5,000-\$9,999

Anonymous (31)
Carolyn Hess Abraham
Carol Adelsheimer
Dr. Lawrence N. Adler
Robert & Patti Americus
Louis & Rosalie Anstandig
Mrs. Marcella Apter
Scott & Ruth Apter
Frani & Milo Averbach
Mrs. Gary A. Bahm
Morris Baker & Saul S. Chosky
Brian & Carol Balk
Deborah & David Baron
Stuart Beckerman
Dr. & Mrs. Irving Bennett
Howard Berger
Carole & Barry Berman

Karen Bernstein
Nancy Bernstein & Dr. Robert Schoen
Bette & Harold Bigler
Mark & Marsha Bookman
Daniel & Jennifer Brandeis
Deborah K. & Raymond I. Bresloff
Rosella Broff
The William Brown Foundation
Charles C. Cohen
Leonard & Amanda Davis
Kathy & Sam DiBiase
Gene Dickman
Betty F. Diskin
Dr. Rachel & Brian Eglash
Judith B. Ehrenwerth
Nurit & Ami Elis
Yetta & Seymour Farber
Eleanor Baker Feldman
Ethel Feldman LOJE
Fidel Family
Joyce & Stephen Fienberg
Elizabeth Finegold
Lynda L. Flom, M.D.
Susan Gromis Flynn
Carl B. & Rita (z"l) Frankel
Dan & Kristin Friedman
Louis L. Friedman Endowment Fund
H. Arnold & Adrien B. Gefsky
Elaine S. Gelb, M.D.
Steffi & Zola Gold
Edward M. & Linda Leebov Goldston
Rita J. Gould
Deborah & Matthew Graver
Danny & Sharon Greenfield
Abby & Edwin Grinberg
Mary & Meyer Grinberg
David E. Gritzer
Dodi Walker Gross
Lori Guttman
Muriel S. Guttman
Sara Guttman
Sara R. Guttman
David Hammerstein
Ron & Leslie Hartman
Drs. Marc Hoffman & Janis Reed
Steven & Vicky Hoffman
Stuart G. Hoffman
Dan & Vicki Holthaus
Sy Holzer
Deborah & Bruce Horvitz
Rhonda & Mark Horvitz
Kathy & Larry Hurwitz
Evan & Adrienne Indianer
Linda Joshowitz
Ellen (z"l) & Gregg Kander
Natalie & Larry Kaplan
Dr. Richard B. Kasdan
Jacob & Augusta Kaufmann Endowment
Fund
Matthew & Kristen Keller
Alicia & Michael Klein
Eugene & Ruth Ann Klein
Dr. & Mrs. Milton J. Klein

Sanford M. Klein, M.D.
 S. Howard Kline
 Reda Kossis
 Harriet & Jules Kruman
 Robert O Lampl
 Edwin Langue
 Thomas Lazenga
 Lynn & Larry Lebowitz
 Sally Perelman Lehman LOJE
 Cindy Goodman-Leib & Scott Leib
 Roberta & Jeffrey Letwin
 Barry Lhormer
 Mr. & Mrs. Jason Lichtenstein
 Seth H. Lichtenstein
 Helane & Don Linzer
 Jay & Kathy Lutins
 Sherry Helfant Malone
 Janet R. Markel
 Myrna L. Mason
 Dr. & Mrs. Charles J. Miller
 Cheryl Moore
 Flo Mae Moravitz LOJE
 Abby Morrison
 Esther Morrow LOJE
 Laurie Moser
 Debbie & Lloyd Myers
 Marlene Naft
 Rae-Gayle & Mitchell Pakler
 Esther Y. Palkovitz
 Papernick Family Foundation
 Barbara & Lester Parker
 Stephen L. Parker
 Eric & Sharon Perelman
 Lori Plung
 Gerald, Myrna & Jon H. Prince,
 & Jennifer L. Poller
 Mrs. Barbara Rackoff
 Richard E. Rauh
 Stanley & Joan Reisman
 Debbie Resnick
 Stephen I. & Audrey G. Richman
 Barbara Rosenberg
 Colin & Jacqueline Rosenberg
 Janice Rosenberg
 Shereen Rosenberg
 Jim & Linda Rosenbloom; Club One
 Carol & Richard Rosenthal
 Michael & Peggy Rosenzweig
 Dodie & Ralph Roskies
 Karen & Anthony Ross
 Drs. Ellen A. & Loren H. Roth
 James S. & Lori J. Ruttenberg
 Bruce D. & Treasure Sachnoff Charitable
 Family Foundation
 Joseph & Martha Safyan
 Ruth & Allan Schachter
 Joan Scheinholtz
 Gloria Schneider
 Ralph & Dorothy Schugar Charitable
 Foundation
 Deborah Shapira & Barry Stern
 Karen A. Shapira LOJE
 Aryeh & Rochelle Sherman

Mark Shiffman & Allison Tucker
 Joel & Debbie Sigal
 Pat Siger
 Lisa Silberman
 Mark & Anna Lisa Silberman
 Alexander & Rosalyn Silverman
 Philanthropic Fund
 Bob & Julie Silverman
 James D. Silverman
 Sheryl & Michael Silverman
 Stuart L. Silverman, M.D.
 Joel Smalley
 Judge & Mrs. Manny H. Smith
 Caren & Howard Sniderman
 Jordan P. Snyder Family Foundation
 Murial & Stuart Spitz
 Robbin Steif
 Myrna & Joseph Stein
 Theodore & Elizabeth Stern
 Mona & E.J. Strassburger
 Marilyn & Robert Swedarsky
 Marilyn W. Swimmer
 The Tabachnicks
 Judy Tobe
 Tree of Life-S'fard Cemetery Fund
 Joseph & Marilyn Turner
 Suzanne P. Wagner
 Judy Wein
 Drs. Joel & Tova Weinberg
 Drs. Lois & Gary Weinstein
 Arlene & Richard Weisman
 Lou & Amy Weiss
 Charles & Elaine Wittlin
 Drs. Allen Wolfert & Adrienne Young
 Myrna & Allan Zelenitz
 Robert P. Zinn & Darlene R. Berkovitz
 H. J. Zoffer

\$2,500-\$4,999

Anonymous (57)
 A&L Motor Sales
 Richard & Cynthia Abrams
 Leslie & Sandy Aderson
 Ronald & Nancy Angerman
 Richard & Roberta Aronson
 Mr. & Mrs. Neal Ash
 Stewart Barmen
 Edgar & Betty Belle
 Tilden Bennett
 Paul J. Berger
 Rabbi Aaron & Dr. Michelle Bisno
 Michael & Carol Bleier
 Elana Bloom & Jeffrey Garrett
 Richard E. Brouman
 Gladys Burstein
 Anna L. & Irene V. Caplan LOJE
 Gertrude F. Caplan LOJE
 Gail & Norman Childs
 H. Adam Cohen
 Mr. Harry S. Cohen
 Sheila & Alex Cohen
 Steven & Nancy Cohen
 Frederick H. Colen, Esq.

Barton & Teri Cowan
 Bernice G. Davis
 Rabbi Chuck & Mickie Diamond
 Ditto Document Solutions, Inc.
 Bernard H. Doft, M.D.
 Linda & Sanford Ehrenreich
 Andrew & Andrea Eller
 Jim Epstein & Susan Sternburg
 Sylvia F. Feinberg
 Steven & Karen Wolk Feinstein
 Raye & Herman Felder
 Dr. Martin & Bracha Leora Fenster
 Mrs. Joseph Field
 Marcella Finegold LOJE
 Lynne & Mark Frank
 Joan B. Friedberg
 Alan A. & Ruth Garfinkel
 Mr. & Mrs. Dan Garfinkel
 Dr. Michael & Lynne Garfinkel
 Rabbi James A. & Barbara S. Gibson
 Fred & Barbara Gilman
 Miriam & Hyman Ginsberg
 Louis & Peggy Gold
 Walter & Helen Goldberg
 Martin & Sally Goldhaber
 Jay Goodman
 Mr. & Mrs. Lee Goodman
 Carole & Mark Gottlieb
 Robert & Joan Green
 Janice & Louis Greenwald
 Steven & Robin Hausman
 Ruth Hecht
 Velma & Stuart Hirsch
 Thomas Hollander
 Teddi & David Horvitz
 Dr. & Mrs. Samuel A. Jacobs
 Jewish Sports Hall of Fame of
 Western PA
 Bud & Jane Kahn
 Leonard & Rhonda Kaplan
 Dr. & Mrs. Peter D. Kaplan
 Goldie J. & Joel W. Katz
 Ellen & Robert M. Katzen
 Mr. & Mrs. Miles A. Kirshner
 Richard J. & Ellen B. Kitay
 Claire Klein
 Natalie W. Klein
 Paula G. & Alan H. Klein
 Mr. & Mrs. L. Stephen Kline
 Bernard & Esther Klionsky
 Annette & Joel Kranich
 Joelle & Curt Krasik
 Alice & Lewis Kuller
 Michael & Susan Kurtz
 David & Dorothy Lampl
 Dr. & Mrs. Ronald Landay
 Dr. & Mrs. Howard N. Lang
 Stanley & Nancy Lehman
 Terry Lerman
 Alan & Sharon Lesgold
 Mitchell & Rhonda Letwin
 Stanton Levenson
 Paul & Melanie Leventon

Abraham M. Levin Endowment Fund
Thomas M. Levine
Drs. Jon & Tracy Levy
Robert F. Lichtenstul
Dr. Shelley & Mr. Jeffrey M. Lipton
Harry Litman
David & Karen Littmann
Andrea & Michael Lowenstein
Dr. Richard Mann
Jason & Beverly Manne
Adele & Robbie Markovitz
Jack & Susan Mennis
Milton & Lois Michaels
Philip & Leah Milch
James Mitnick
Stephen & Tammie Moritz
Carin & Kevin Nord
Elliott S. Oshry
Anthony & Amy Pardo
Shlomo & Chana Perelman
James & Terri Polacheck
Dr. & Mrs. Burton Pollock
Myrna Pollock & Charles Strotz
David & Marilyn Posner
Melissa & Peter Rackoff
Rascoe Families
Joan & Jim Reich
Beverly & Howard Rieger
Fred & Sally Rock
Dr. Bruce & Jane Rollman
Mark D. Rosen & Family
Richard & Ellaine Rosen
The Rosen Family
Mrs. Louisa Rosenthal
Ilene & Jim Ross
Ellen & Michael Roteman
Joan & Ronald Rothaus
Marcia & Jerry Rubenstein
Caryn B. Rubinoff
Iz & Judi Rudoy
Marvin C. Rulin, M.D.
Dr. Richard & Heidi Russman
S&T Bank
Twyla & Robert Sable
Ruth Sachnoff LOJE
Laura & Gary Saulson
Eric Schaffer & Michelle Gray Schaffer
Carl & Roni Schiffman
Jonathan & Veronica Schmerling
Michael & Barbara Schneider
Dr. & Mrs. Joel Schuman
Larry Schwartz & Rabbi Jessica Locketz
Mr. & Mrs. Herschel Segall
Herbert L. Seigle/Robin J. Bernstein
Barbara & Larry Shuman
David P. & Lynne Siegel
Ed & Barbara Siegel
Dr. & Mrs. Saul J. Silver
Jill & Marc Silverman
Linda & Kenneth Simon
David J. Slesnick & Gerri Sperling
Lynn J. Snyderman & Lewis N. Hyman
Marcie Solomon & Nathan Goldblatt

William & Helena Spatz
Mark Sperling
Vera Sperling
Freda Spiegel
Joseph & Marilyn Spierer
Judy & Al Stein
Dr. Mervin S. & Marcia M. Stewart
Drs. Edward & Diane Szabo
Amy W. & William Taxay
Allan & Charlene Tissenbaum
Barbara & Emil Trellis
Valinsky Family
Claire & Mel Vatz
Rochelle D. Wagner
Iris Amper Walker
Marcia Walsh
Kenneth M. & Janis R. Wasserman
Dr. Lawrence & Phyllis Wechsler
Marvin M. Wedeen
Dr. David & Joan Weinbaum
Dr. & Mrs. Lee Weinberg
Martin Wekselman
Amy & Greg Winokur
Mr. & Mrs. Michael Zampogna
Nancy & Leon Zions

\$1,800-\$2,499

Anonymous (38)
Jeffrey & Lyn Ackerman
Mark & Sharon Ackerman
Dan & Ronna Harris Askin
Lynn & Carl Bahm
Dr. David Baker & Sharon Dilworth
Dr. Marshall & Karen Balk
Robert S. Barmen
Harriet & Raymond Baum
Natalie & Richard Berger
Rabbi Alvin & Flora Berkun
Harry S. Binakovsky, M.D.
David & Kate Blank
Rachel H. Blaufeld
Eva Tansky Blum
Alfred & Dolores Blumstein
Michael Boninger & Judy Wertheimer
Cheryl Braver
David Brillman
Beverly & David Brinn
Nina & Dan Butler
Meredith & David Cohen
Jared & Maureen Cohon
James Colker
Lynn Cullen
Hallie & Joshua Donner
Seymour & Ruth Drescher
Cathy & Dan Droz
Amy & Gary Dubin
Marty & Elyse Eichner
Laura Ellman & Peter Ennis
Robert & Gloria Ennis
Arthur & Betty Evans
Josh & Julie Farber
Glen Feinberg
Rodney W. Fink

Nate & Debby Firestone
Gary & Margaret Fischer
Natalie H. Friedberg
Ed Frim & Lori Abrams
Evan & Jill Gerson
Drs. Peter & Kristina Gerszten
Dr. & Mrs. Harold M. Glick
Mark J. Goldberg, Esq.
Sandra Golding
Jack S. Goldsmith
Bernard Goldstein & Russellyn Carruth
Dr. Alan & Temima Gradman
Mr. Efrem M. Grail & Dr. Karen S. Goldman
Juliette D. Grauer
Dorothy Dresbold Greenberg & Herman Greenberg (z"l)
Dr. Yram & Merris Groff
Anthony M. & Rosanne I. Harrison
Jane E. Hepner
Amy & Brian Himmel
Judi & Irwin Hirsh
Jan & Mitchell Hoffman
Carole Horowitz
Dr. Dennis & Linda Hurwitz
Shlomo & Leah Jacobs
Barry Judd
Richard & Alice Kalla
Daniel & Robert Kamin
Mark S. Kamlet
Stuart & Laura Kaplan
Mina Kavalier
Eydie & Adam Kolko
Mr. & Mrs. James E. Kopelman
Yuval & Catia Kossovsky
Madeline P. Kramer
Estelle Kruman
Steve Lasky & Marcia Kurs-Lasky
Dr. David J. & Debra C. Levenson
Lawrence F. Leventon & Susan Silversmith
Dr. & Mrs. Marvin H. Levick
James & Regina Levin
Clifford & Rosanne Levine
Evelyn "Evie" Levine
Dr. Macy I. Levine
Lois G. Levy
Nancy & Michael Lichtenstein
Marvin S. Lieber
Marty & Michelle Lubetsky
Dr. & Mrs. Robert M. Lumish
Rachel H. Marcus
Ronald & Leslie Marcus
David & Carole Maretsky Family
Emily S. Mendelson
Barbara Sachnoff Mendlowitz
Joel & Nancy Merenstein
Stuart & Linda Miller
Laurie & Victor Mizrahi
Paul Munro & Avi Baran Munro
J. Robert & Ruth Westerman Myers
Erik C. Naft
Harvey & Esther Nathanson

Bryan S. Neft & Julie K. Cohen
 Anita Newell
 Ivan J. & Natalie E. Novick Memorial
 Fund
 Mr. & Mrs. Jack Offenbach
 Seth & Pamela Pearlman
 Bernard & Sandra Pinsker
 Chaya & Dean Pollack
 Drs. Lisa & Jacky Prucz
 Andy & Stacey Reibach
 Ruth & Marvin Reidbord
 Emily & Robert Richman
 Dr. Jules Rosen & Ms. Debra Fox
 Joel & Kate Rosenthal
 Mildred Rubenstein
 Dr. Fred Rubin
 Deanna Love Rutman, M.D.
 Drs. Susan & Eric Safyan
 Charles & Sharon Saul
 Deborah & Alan Scheimer
 Scott & Stacey Seewald
 Dr. & Mrs. Morton Seltman
 Joshua & Amanda Shapira
 Sorley S. Sheinberg
 Mindy J. Shreve
 Mr. & Mrs. Herb Shuman
 Norma & Erv Sigal
 Arnold B. & Susan L. Silverman
 David M. Silverman
 Jerry D. & Phyllis G. Silverman
 Judith Small & Ira J. K. Cohen
 Jessica Brown Smith
 Keith S. Somers & Deborah R. Moss
 Dr. Edward & Amy Sorr
 Dr. Richard Spiro & Paula Kovanic Spiro
 Saul & Diana Spodek
 Diana Stern
 Aron & Irene Szulman
 Mitchell & Barbara Taback
 Jeanne & Dr. Barry Tenenouser
 Elly & Mitchell Toig
 Dr. & Mrs. Albert Treger
 Evelyn & Bill Wedner
 Howard Wein & Susan Bails
 Harvey Weissman
 Dr. S. Rand Werrin
 Robert & Roelie Whitehill
 Raymond & Ellen Wiener
 Wolper Family
 Susan & Howard Zwilling

\$1,000-\$1,799

Anonymous (88)
 Stanley & Judy Adelsheimer
 Carol & Jon Adler
 Tom & Marian Allen
 Rachael Altoff & Alex Speck
 Scott Americus
 Joan Frank Apt & Families
 Jane Callomon Arkus
 Stephen & Suzanne Baker
 Dr. Phillip & Bette Balk
 Howard & Elsie Balsam

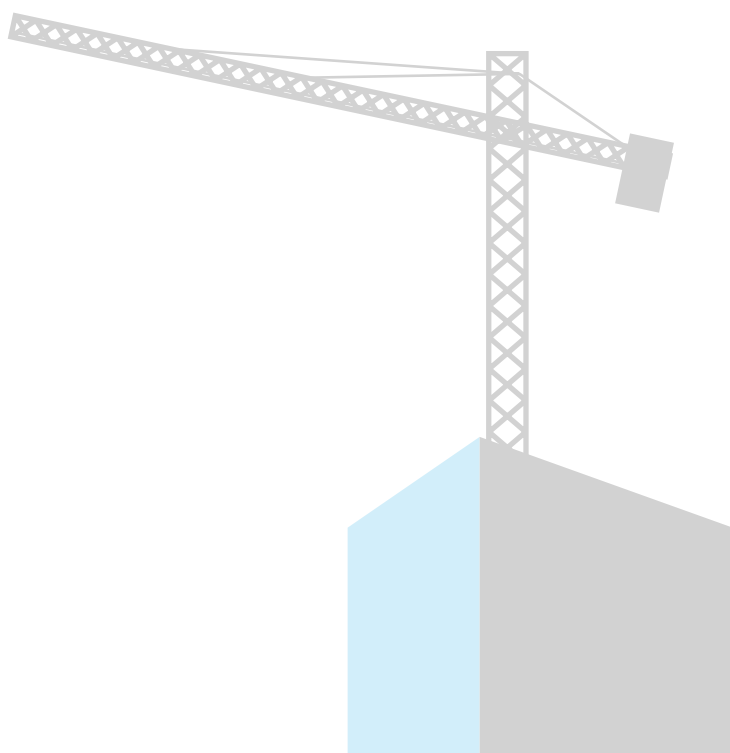
Dan & Lauren Bartholomae
 Mr. & Mrs. Bernard Bauer
 Allen J. Baum
 Ann L. Begler
 Mr. & Mrs. Robert Bell
 Jane R. Berkey
 Deborah & Sam Berkovitz
 Jeffrey & Marcy Bernson
 Marc & Lois Bernstein
 Joe & Jane Blattner
 Stewart & Kathy Bleckman
 Marian & Bruce Block
 Charles D. Bluestone, M.D.
 Eleanor F. Blum (Mrs. Max)
 Arlene & Bill Brandeis
 Joy Braunstein
 Richard & Elizabeth Brenner
 Mr. & Mrs. William J. Brustein
 Neal Buckstein
 Dr. Stuart S. Burstein
 Donald & Chantze Butler
 Pat Calabro
 Dr. Paul S. Caplan
 B. Mark Chernoff
 Norman & Hannah Cohen
 Morton & Greta Coleman
 Carol & Thomas Congedo
 Marion Damick
 Daniels & Miller, Inc.
 Benjamin & Sarah Davies
 Mrs. Ada Davis
 Pauline & Charles Davis
 Susan Denmark & Marc Darling
 Maurice Deul
 Margit A. Diamond
 Margie & Paul Dubner
 Evan J. Durst
 Gail A. Edelson, MD
 Mr. & Mrs. David Edelstein
 Debra Eisner & Barry Faigen
 Ken & Jodi Eisner
 Mrs. Renie Ellman
 Bob Ellsworth
 Jeremy Feinstein & Stefani Pashman
 Moses & Laryn Finder
 Richard & Susan Finder
 Ilene & Jay Fingeret
 Lois K. Finkel
 Ira M. Frank
 Adrienne Freedel
 Eva & Gary Friedman
 Jennifer & Alan Friedman
 David & Kymberlee Frischman
 Dr. Russell & Nancy Fuhrer
 Jacki & Steve Gelernter
 Andrea & David Glickman
 Carol Gluck & Albert Weiner
 Emily & Richard Goldberg
 Bette Jean Goldblum & Family
 Marilyn Goldman
 Robert & Mary Kay Golomb
 Gerry Gondelman
 Elizabeth & Jerry Gordon

Sam & Ele Granowitz
 Marjorie C. Greenberger
 Gary & Tracy Gressang
 Dr. & Mrs. Howard Grill
 Edith Grinberg
 Carol Sikov Gross
 Donald & Susie Gross
 Margie & Jerry Gross
 Arthur & Barbara Grossman
 Dr. David & Linda Harinstein
 Stuart I. Harris
 Manfred & Bella Heppenheimer PACE
 Adam & Monica Hertzman
 Alan & Dana Himmel
 Drs. Barry Hirsch & Jean Harwick
 Stanley Hirsch
 Janet & Allen Hirshberg
 Jen & Seth Holst
 Becca & Aaron Hurowitz
 Andi & Steve Irwin
 Jonathan & Lindsey Isaacson
 Marlene & David Jacobs
 Jenny & Chad Jones
 Adie & Elmer Judd
 Mr. Lawrence A. Kades
 Cele Kinselbaum
 Joan M. Kaplan
 Michael & Atara Kentor
 Sydelle Kessler
 Maxine & Macy Kisilinsky
 Gloria Kleiman
 Mr. & Mrs. Daniel & Gayle Kraut
 Frances & Michael Lando
 Jay & Rebecca Lasus
 Symoine K. Laufe
 Paul Lebovitz & Mark Caldane
 Marcia J. Levaur
 Lewis Levick
 Frances F. Levin
 Ken Levin & Marcie Mitre
 Harvey & Ethel Levine
 Arlene Levy & Ralph Liebstein
 Malcolm & Angela Levy
 Gene & Julia Leyzarovich
 Phyllis Lhormer PACE
 Sheree Lichtenstein
 Sue & Richard Linzer
 Mr. & Mrs. Gregory W. Lippard
 Kathy & Marc Lipsitz
 Mr. & Mrs. Edward Lipsman
 Robert & Marlene Litman
 Margery J. Loevner
 Michael & Jane Louik
 Matthew Mallet & Laine Guttman
 Dr. Esther Marine
 Ira & Susan Mazer
 Marjorie Mazer
 Marilyn & Allan Meltzer
 Carl Metosky & Family
 Sandee & Stewart Metosky
 Nicole & Roi Mezare
 Drs. Ricardo & Blima Mitre
 Ms. Pearl Moore

Amy B. Morgan
Shirley Moritz
Bunny & Marvin Morris
Mrs. Sam Morris
Janet & Jack Mostow
Sidney & Eleanor Mullen
Dr. & Mrs. Richard Myerowitz
Barry & Janice Nathan
Emil & Judith Neufeld
Dr. & Mrs. Bernard D. Newman
Yvonne Novick
Nathan & Myrna Ortinberg
Barry J. Palkovitz
Judy Palkovitz
Dr. & Mrs. Mark Pechersky
Donald L. & Debbie Phillips
Dr. & Mrs. Gerald Polinsky
Sylvia Mendelsohn Pomerantz & Marc
Pomerantz
Susan & Scott Portnoy
Myrna D. Prince
Shirley C. Rapport
Reid B. Roberts
Jim Roddey
Judith R. Roscow
Stephen D. Oliphant
Dr. Pinchas Rosenberg & Aviva Fisher
Rosenberg
Natalie & David Rosenbloom
Dr. Lee & Rosalind (z"l) Rosenblum
Yale & Barbara Rosenstein
Adam Rothschild
Ruth S. Rubenstein
Richard & Judith Rubinstein
Laurel & Zarky Rudavsky
Rabbi & Mrs. Mordy Rudolph
Paul & Debbie Rudoy
Steven & Arlene Sablowsky
Debby & Tom Samakow
Miriam G. Schaffel
Dr. & Mrs. Harold Z. Scheinman
Dr. & Mrs. Melvin M. Schiff
Mrs. Lawrence Schneirov
Sharon & Steven Schwartz
David & Betty Segel
Jesse Shapira
Susan Shapira
Ron Shapiro & Mary Austin
Zalman & Evelyn Shapiro
Saul Shiffman & Joan Wagman
S. Leonard Shufler
Phyllis Silver
Phyllis & Steve Silverman
Meyer Simon
Nancy L. Simon
Sandy & Phil Singer
Carol & Harvey (z"l) Sloan
Judy & Frank Smizik
Anita Lopatin Smolover
Howard Snyder
Chester Spatt & Saralouise Reis
Hilary Spatz & Max Levine
David Spear

Janet & John Spear
Sally Stein
Stanley M. Stein
Terry & Kenny Steinberg
Steinsapir Family Foundation
Honorable Gene Strassburger & Dr.
Phyllis Kitzerow
Connie & Peter Sukernek
Joshua & Kira Sunshine
Dr. & Mrs. Theodore M. Tabachnick
Mr. & Mrs. Marc L. Tannenbaum
Michael Tobias & Marsha Zuckerman
Professor & Mrs. Franklin Toker
Hal & Diane Waldman
Mike Warshafsky
Lois S. Weaver
Dr. & Mrs. Cyril (Sigrid) Wecht
Albert & Shirley Wein
Mr. & Mrs. Stanley Weiner
Greg & Laurie Weingart
Mr. & Mrs. David Weisberg
Mr. & Mrs. Ira Weiss
Wilfred & Lila Weiss
Leonard Weitzman
Michael & Marla Werner
Ronit & Harold Wiesenfeld
Irwin D. Wolf, Jr. Memorial Endowment
Fund
Elaine & Harvey Wolfe
Dr. & Mrs. Bernard Wolfson
Joan & Jerry Wolfson
Richard & Roxanne Wolk
Gregory Zaretsky
Shirley & Al Zions
Gerald Ziskind, Esq.
Marlene & Bob Zukerman
Elaine & Neal Zweig
Jay & Kimberly Zytznick

Current as of September 13, 2013



THE JEWISH COMMUNITY FOUNDATION

Through the Jewish Community Foundation, donors give back to our community by establishing philanthropic funds, endowments, trusts, and leaving bequests that address our most pressing needs, enrich our culture, and strengthen our community.

The Foundation currently manages more than \$180 million in assets, which encompasses over 1,000 funds and reflects more than \$14.3 million in new money donated during 2012-2013.

UNRESTRICTED ENDOWMENT

Each year, the Foundation's unrestricted endowment funds a number of programs and services. The following are some of the programs this year:



With the support of the Jewish Community Foundation, the Edward and Rose Berman Hillel Jewish University Center engaged a *Jewish Educator* to infuse Jewish ethics, values, history, and philosophy into Hillel programming. By teaching and inspiring, this new resource provides for enhanced Jewish experiences for students and staff alike.

With an aging and dwindling community of survivors, the Holocaust Center of the Jewish Federation is challenged to teach the lessons of tolerance without the benefit of compelling firsthand stories related by those who experienced the Holocaust. Foundation funding is helping the Center develop a new school curriculum to provide high-quality Holocaust education in schools across Western Pennsylvania. Called *UpStander Ed.*, the curriculum will focus on the importance of standing up for what is right by refusing to be a bystander in the face of bullying and prejudice.

DVASH: Dynamic Vision for the Active Study of Hebrew, a new program of the Agency for Jewish Learning, helps Hebrew schools to apply reading science best practices and understanding of teaching students with dyslexia to improve Hebrew education for students with and without disabilities.

The Jewish Association on Aging, with Foundation support, is implementing a fully-integrated *Electronic Health Record System* to minimize errors in clients' records, while making more efficient use of program administrators' resources, thus giving staff more time for resident care. Such a system does not currently exist in Long Term Care, thus making this a prototype for senior care facilities throughout the country.



Depression stands to dramatically impact physical health, particularly among the aging. Thanks to a Foundation grant, Riverview Towers has instituted a system of providing *Mental Health Screenings* that has enabled the agency to engage a mental health professional to work with Riverview's service coordinators to identify and support residents with issues caused by depression.



AgeWell Pittsburgh is an acclaimed national model started here in Pittsburgh. A collaboration between three Federation agencies, the Jewish Association on Aging, Jewish Community Center, and Jewish Family & Children's Service, AgeWell is a one-stop resource that links older adults, their family members, friends, and caregivers to the services they need — and provides ongoing expertise as their circumstances change.

With support from a multi-year Foundation grant, the Agency for Jewish Learning's **Teen Engagement Initiative** works to deepen the connection of nominally affiliated Jewish young adults with meaningful Jewish life experiences and activities. The program serves more than 500 Jewish teens by meeting their real-life needs as well as providing networking opportunities and professional development to area youth professionals.

DONOR DIRECTED FUNDS

This is what makes the Foundation the "Jewish Community Foundation." By attaching your name or the name of a loved one to an endowment you've created, you are preserving your family's legacy in Pittsburgh.

The Jewish Community Foundation was established to assist men and women who want to benefit the Jewish community far into the future.

LEAVING A LEGACY

A **Lion of Judah Endowment** (LOJE), is a permanent endowment fund created by a woman to ensure her Lion of Judah-level annual commitment (\$5,000 or more) in perpetuity. By creating a fund today — or through a planned gift— a woman can leave an enduring legacy that continues to contribute \$5,000 or more each year to the Annual Campaign.

A **Permanent Annual Campaign Endowment** (PACE) offers a similar opportunity for donors seeking to endow their Annual Campaign commitments in any amount. In this way, donors can ensure that they will continue to care for those in need and nurture and sustain the Jewish community now and for the future.



CENTENNIAL FUND FOR A JEWISH FUTURE

We envision a thriving and vibrant Jewish community in Pittsburgh. A community comprised of people who actively participate in Jewish programs and possess a strong desire to pass the love of Judaism on to our children and grandchildren.

The Centennial Fund for a Jewish Future (CFJF) is the most significant philanthropic endowment undertaking in Pittsburgh's Jewish history, supporting immediate and ongoing funding for Jewish education, Israel travel and Jewish summer camping — important activities that keep us connected to our rich heritage and traditions. By removing cost barriers to high-quality programming, CFJF makes Jewish experiences accessible to everyone.

This year, a generous group of donors have committed to supporting a **\$1 million matching grant**, which will be used to promote a "Challenge Year" as an additional incentive to secure endowment gifts for Jewish engagement and education.



The **Stanley and Flo Mae Moravitz (ז"ל) Israel Scholarship Endowment Fund** provides financial aid to local teens and young adults for travel to Israel on accredited programs. The fund has provided an influx of additional support that has significantly increased the amount of needs-based aid offered to local youth wishing to grow from an Israel experience. This year, the fund enabled 31 Jewish children from Pittsburgh to travel to Israel, providing an opportunity to build a connection to their Judaism that is proven to stand the test of time.

The fund provides opportunities for all Jewish children to attend summer educational travel, semester-in-Israel high school, and full-year yeshiva or seminary programs.

The One Happy Camper program, underwritten by the **Papernick Family Foundation**, provides \$1,000 incentive grants for parents sending a child to a Jewish overnight camp for the first time.

Jewish summer camping experiences turn youth into engaged and spirited adults, laying the groundwork for strong Jewish communities. The program has helped nearly 500 kids go to Jewish overnight camp over the past two summers.

Dear Fund for a Jewish Future,

Words alone cannot thank you for the generous gift of the grant that our daughter received to attend Emma Kaufmann Camp this summer. The grant lifted the stress of financial responsibility for us.

Our daughter had a great time and talks every day about coming back next summer!

This summer, **Temple Beth Israel of Steubenville, Ohio** joined the distinguished list of Founders of the CFJF by dedicating \$250,000 to provide opportunities for kids and young adults to strengthen their Jewish identity and choose to raise Jewish families. The synagogue's board used funds from the sale of its building to support its ongoing commitment to Jewish education, which will have a permanent impact on the future of Jewish life in the local community.





JEWISH COMMUNITY FOUNDATION

CREATORS OF VISION

The Creators of Vision listed below are donors of permanent endowments & planned gifts of \$100,000 or more.

Alan L. & Barbara B. Ackerman
Harry & Carol D. Adelsheimer
David I. & Meryl K. Ainsman
Elliot, Freda & Stephen Alber
Anonymous (2)
Paula S. Atlas
Doris S. Balter ★
Oscar & Marjorie Balter
Deborah & David Baron
Beth Neuman Bates
Ahmie & Sara Baum ★
Ernest S. & Natalie Laufe Berez
Meyer & Merle Berger Family Foundation
Rose Berger
Allen H. & Selma W. Berkman
Edward & Rose P. Berman ★
N. Barry & Carole Berman ★
Patricia G. & Sanford S. Berman
Michael & Amy Bernstein ★
Dr. Susan G. Berman
Samuel & Lois Blaufeld
Max & Charlotte G. Bluestone
Melvin J. & Rebecca N. Bodek
Dr. Saul & Maude Boharas ★
Daniel & Jennifer Brandeis ★
William & Arlene Brandeis ★
Robert & Lillian Brent
Louis B. & Sylvia Brody
Marks & Rose Browarsky
David Burstin & Dr. Barbara Stern
Burstin ★
Dr. Sidney N & Sylvia A. Busis ★
Anna L. & Irene V. Caplan
David & Rachel Caplan
Louis Caplan
Dr. Paul & Gertrude F. Caplan
Philip Chosky ★
Henrietta Chotiner
Abe R. Cohen
Jesse & Naomi Cohen
Sara S. Cohen ★
Amos & Ethel Comay
Sholom & Estelle F. Comay
Elliot & Deborah Cosgrove
Jacob & Mildred Davis
Jean L. Davis
Stanford & Marian Unger Davis
Robert & Gene Dickman
Betty F. Diskin
Gary & Amy S. Dubin

Morris, Fannie & Mary Echelman
Judith B. Ehrenwerth
Marjory S. Eiseman
Milton & Sarita Eisner
Libby Elbaum
Louis Engelberg
Maurice & Laura Falk ★
Eleanor Baker Feldman
Ethel Feldman
Sara Fine
Sheila Reicher Fine
Elizabeth Finegold
Marcella Finegold
Jeffrey & Jennifer Finkelstein ★
James A. & Ruth O. Frank
Mulford Friedberg
Kristin & Daniel Friedman
Louis L. Friedman
Harold & Esther Garfinkel
H. Arnold & and Adrien B. Gefsky
Doris Gillman **
Gerald Ginsburg
Robert I. & Megan E. Glimcher ★
Dr. Solomon & Sarah Goldberg ★
Morris Goldberg
Jack S. Goldsmith
Mark Goldsmith
Jean, Lillian & Dr. Henry J. Goldstein ★
Lauren Goldstein **
Michael & Ellen Teri Kaplan Goldstein
Sarah & Tena Goldstein ★
Edward M. & Linda Leebov Goldston ★
Ira & Nanette Gordon
Rita J. Gould
Dr. Lewis & Ruth Gumerman
J. M. Gusky ★
Barney C. & Susan G. Guttman ★
Richard & Lori Guttman **
Monroe Guttman ★
Alfred J. Halpern
Bernard M. Halpern
Julius Halpern
Lester A. Hamburg ★
Edward N. & Jane Haskell
Manfred & Bella Heppenheimer
Alan & Dana Himmel
Burton & Ruth Hirsch
Philip & Gertrude Hoffman
Evan & Adrienne Indianer
Larry & Melissa Jacobson
James & Linda Jshowitz
Hannah H. Kamin
Emanuel & Judith Kanal **
Linda S. Kann
N. P. & Evelyn J. Kann ★

Richard & Anna L. Kann
Emanuela Kates
Marshall P. Katz
Lois Kaufman ★
Jacob & Augusta Kaufman
Oliver & Frieda T. Kaufman
Matthew & Kristen Keller
Ellen P. Kessler
Charles Kirshner & Leone P. Paradise
Eugene & Ruth Ann Klein
Murray Klein
Seymour & Claire Klein
Lawrence & Sulamita Klotz
Herbert Krebs
Jeremy Z. & Rebecca Kronman ★
Rita P. Langue
Marilyn S. Latterman
Florence Leebov
Sally Perelman Lehman
David R. & Frances F. Levin ★
Stanley & Patty Levine
Phyllis Lhorner
Jason & Julie Lichtenstein
Leonard Lipsky
Hilde Lowenstein
Louis & Dorothy Mallet
Robert I. Mallet
Sherry Helfant Malone
Andrew Aryeh & Irene Marchbein
Max K. Markovitz
Bernard & Barbara Mars ★
Peter Mayer
Benjamin & Dorothy Melnick
Sandra Rosecrans Metosky
Jack A. & Bernice E. Meyers
Sam Michaels
Barbara Thorpe Miller
Rebecca Miller
Janie & Edward Moravitz
Stanley & Flo Mae Moravitz (z"l)
Perry & BeeJee Morrison
Martin S. & Esther B. Morrow
Casey & Marilyn Neuman
Mollie S. Neuman
Dr. Bernard D. & Alison K. Newman
Ivan J. & Natalie E. Novick
Robert & Susan Oberg Lane
Gerald S. & Lynn S. Ostrow ★
Nancy & Woody Ostrow ★
Cynthia Neuman Overbye
Mitchell & Rae-Gayle Pakler
Esther Y. Palkovitz
Eric J. & Sharon W. Perelman
Mark L. & Carina Perilman
A.Z. & Fannie Pittler ★

Amy & Edwynn Platt
 Plung/Resnick Families
 Charles Porter & Hilary Tyson ★
 Barbara W. Rackoff
 Nancy L. & William H. Rackoff
 Todd & Batia Rascoe
 Richard E. Rauh
 Reidbord – Spear Family
 Louis J. & Florence Reizenstein
 Emily Farkas Richman
 Hyman Richman ★
 Stephen & Audrey Richman
 Howard M. & Tina S. Rieger
 Alex Robinson
 Donald M. & Sylvia M. Robinson ★
 Sanford Robinson ★
 Alvin & Ann Rogal
 Ellaine H. Rosen
 Ronald C. Rosen
 Janice Rosenberg
 Torrence & Fanny Pushin Rosenberg★
 Sara Rosenblum
 Joel & Kate Rosenthal
 Dr. Theodore B. Rosenthal
 Benjamin Ross ★
 Samuel & Sarabelle Rudick
 James A. & Louisa Rudolph ★
 Leonard H. & Doris G. Rudolph Family ★
 William C. & Lieba Rudolph ★
 Stanley & Judy B. Ruskin
 Ruth Sachnoff
 Ruth G. Schachter
 Leonard & Joan Scheinholtz
 Evan & Tracy Segal ★
 Daniel & Barbara Shapira
 David & Karen A. Shapira
 Saul F. & Frieda G. Shapira
 Sam, Jason & Howard Shapiro
 Robert & Lori B. Shure
 Alexander S. & Rosalyn Silverman
 Arthur & Marlene Silverman ★
 Bernard Silverman
 Marjorie K. Silverman
 George P. & Violet Slesinger ★
 Harvey B. & Carol Sloan
 Albert & Anita Smolover
 Sandy Snyder **
 Violet Soffer
 Robert M. & Lois R. Solomon
 Samuel, Fannie & Dr. Irwin A. Solow ★
 Emanuel, Mary & Marjorie Spector ★
 Irving Spolan ★
 William & Olga Stark
 Carol H. & David W. Steinbach
 Charles M. & Rhoda L. Steiner
 Joseph & Judy Sufrin
 Judith Tobe **
 Rebecca & Scott Tobe
 Benjamin & Elizabeth Trau
 Isadore & Anna Verbofsky ★
 Irving A. & Jacquelin G. Wechsler
 Robert & Judith Wein
 Gerald H. & Naomi J. Weiner ★

Maurice & Adele Weiner ★
 Lois F. Weinstein
 Robert J. & Susan K. Weis
 Richard & Arlene Weisman ★
 Lou & Amy Weiss ★
 Kathryn & Randy Whitlatch **
 Joseph N. Wiener
 Arnold & Norma Wilner
 Charles & Elaine Wittlin
 John M. & Leatrice K. Wolf ★
 John M. Jr. & Martha O. Wolf ★
 Jacob Wolhendler ★

★ indicates an Annual Campaign
 endowment of \$200,000 or more or a
 permanent endowment of \$500,000
 or more

** indicates a new gift.

LION OF JUDAH ENDOWMENT

These women have established a
 permanent endowment fund that
 will perpetuate their Lion of Judah
 commitment of \$5,000 or more
 to the Annual Campaign. The
 Lion of Judah is an internationally
 recognized designation for women
 philanthropists.

Anonymous (2)
 Barbara Ackerman
 Carol Adelsheimer
 Meryl K. Ainsman
 Deborah Baron
 Sara Baum ★
 Patricia Berman
 Rose P. Berman ★
 Dr. Susan G. Berman
 Amy R. Bernstein ★
 Charlotte G. Bluestone ★
 Dr. Jennifer Brandeis ★
 Dr. Barbara S. Burstin ★
 Sylvia A. Busis ★
 Anna L. * & Irene V.* Caplan
 Gertrude F. Caplan *
 Deborah Cosgrove
 Marian Ungar Davis**
 Betty F. Diskin
 Judy B. Ehrenwerth
 Sarita Eisner
 Eleanor B. Feldman
 Ethel Feldman *
 Sheila Reicher Fine
 Marcella Finegold *
 Dr. Jennifer Finkelstein
 Doris Gillman**
 Megan F. Glimcher
 Ellen Teri Kaplan Goldstein
 Lauren Goldstein *
 Linda Leebov Goldston
 Nanette Gordon
 Rita J. Gould
 Lori Guttman **
 Susan G. Guttman

Jane Haskell *
 Rhonda Horvitz
 Adrienne Indianer
 Linda Joshowitz **
 Hannah H. Kamin
 Judith Kanal **
 Anna L. Kann *
 Lois Kaufman ★
 Kristen M. Keller
 Ellen P. Kessler
 Rebecca Kronman **
 Rita Perlow Langue
 Marilyn S. Latterman
 Florence Leebov
 Sally Perelman Lehman
 Julie Burstin Lichtenstein
 Sherry H. Malone
 Barbara F. Mars
 Sandra Metosky
 Bernice E. Meyers
 Barbara Thorpe Miller
 Florence Moravitz * **
 Janie Moravitz
 BeeJee Morrison
 Esther B. Morrow *
 Marilyn S. Neuman ★
 Susan Oberg Lane
 Lynn S. Ostrow *
 Nancy Ostrow ★
 Esther Y. Palkovitz
 Sharon W. Perelman
 Carina Perilman
 Amy Platt **
 Barbara W. Rackoff
 Nancy Rackoff
 Batia Rascoe
 Emily Richman
 Sylvia M. Robinson ★
 Ellaine H. Rosen
 Janice G. Rosenberg
 Kate Rosenthal
 Doris G. Rudolph
 Judy B. Ruskin ★
 Ruth Sachnoff *
 Ruth G. Schachter
 Cynthia D. Shapira
 Karen A. Shapira ★ *
 Lori B. Shure
 Marjorie K. Silverman
 Marlene F. Silverman ★
 Rosalyn Silverman
 Sandy Snyder **
 Violet Soffer
 Carol Steinbach
 Judy Sufrin
 Judith Tobe
 Rebecca Tobe
 Hilary Tyson ★
 Dodi Walker Gross **
 Judith A. Wein
 Lois F. Weinstein
 Susan K. Weis
 Amy S. Weiss

Kathryn Whitlatch **

Elaine Wittlin **

Lee K. Wolf ★

Martha O. Wolf ★

* = indicates deceased

** = indicates new LOJE

★ = indicates Star of David LOJE
(\$200,000+ endowment)

PERMANENT ANNUAL CAMPAIGN ENDOWMENT

These donors have established a permanent endowment fund that will perpetuate their commitment to the Annual Campaign.

Selma Bancheck

Ahmie Baum ★

Edward Berman ★

Michael Bernstein ★

Daniel Brandeis ★

William & Arlene Brandeis ★

Joseph & Kitty Breskin

David Burstin ★

Philip Chosky

Jacob & Rebecca Cohen

Joseph & Lillian Cook

Jeffrey Finkelstein ★

Dr. Bernard & Shirley Fisher

Frederick Frank

Robert Glimcher ★

Barney Guttman ★

Monroe Guttman ★

Richard I. Halpern

David Hast

Bella Heppenheimer

Alan & Dana Himmel

Larry & Melissa Jacobson

Allan J. & Betsy Kanarek

Marshall Katz

Jacob & Augusta Kaufmann

Seymour & Claire H. Klein

Jeremy Kronman ★

Bernard Mars ★

Hannah (Jeanette) Gumperz-Mayer

J. Robert Myers

Douglas Ostrow ★

Gerald S. Ostrow ★

Mitchell Pakler

Eric J. Perelman

Howard Rieger

Donald Robinson ★

Alvin & Ann Rogal Family

Fanny Pushin & Torrence Rosenberg ★

James Rudolph ★

Leonard H. Rudolph ★

William Rudolph ★

Stanley Ruskin ★

Evan Segal ★

Louis & June Siegel

Art Silverman

Joel Smalley

Donald & Sheila Solow

William & Olga Stark

David Steinbach

Charles Steiner

Andrew Stewart ★

Isadore & Anna Verbofsky ★

Lou Weiss

Philip Wiener

John M. Wolf ★

John M. Wolf Jr. ★

★ = indicates Star of David (\$200,000+ endowment)

CENTENNIAL FUND FOR A JEWISH FUTURE

The Centennial Fund for a Jewish Future is the Foundation's ambitious endowment campaign designed to support programs and activities to strengthen Jewish learning and engagement now — and into the future.

Anonymous (2) ◆

Howard & Elsie Balsam Yeshiva Fund

David and Deborah Baron Fund

Adolph, Magda & Fyrne Bergstein

Memorial Fund

Berman Kress Fund

Daniel & Jennifer Brandeis Community

Day Fund

Robert & Lillian Brent Fund for Hillel

Academy

Barbara & David Burstin Agency for

Jewish Learning Fund ◆

Barbara & David Burstin Community Day

Fund ◆

Barbara & David Burstin Hillel Jewish

University Center Fund ◆

Barbara & David Burstin Penn State Hillel

Fund ◆

Sidney & Sylvia Busis Fund

Philip Chosky Fund ◆

Brian & Rachel Eglash Fund

Milton & Sarita Eisner Fund

Jeffrey & Jennifer Finkelstein Centennial

Fund for a Jewish Future

Fund for a Jewish Future Fund

H. Arnold & Adrien B. Gefsky Fund ◆

Geoffrey & Laurie Gerber Chabad of the

South Hills Fund for a Jewish Future

Dr. Solomon & Sarah Goldberg Fund for

a Jewish Future ◆

Jean, Lillian & Dr. Henry Goldstein Hillel

JUC Fund ◆

Edward M. & Linda Leebov Goldston

Fund ◆

The Guttman Family Fund for a Jewish

Future

Halpern Family Fund

Lester A. Hamburg Memorial Fund

Heppenheimer Family Israel Scholarship

Fund

Judi & Manny Kanal Fund for a Jewish

Future

Frances Levin Fund ◆

Jeffrey B. Markel & Carol L. Robinson

JCC Fund

Louis & Anne Meyers, Jack & Bernice

Meyers, Tibey & Julian Falk Fund

Philip & Leah Milch Fund

Linda & Stuart Miller Fund for a Jewish Future

Stanley & Flo Mae Moravitz (z"l) Israel Scholarship Fund ◆

Laurie & Robert Moser Fund

K. Sidney & Marilyn Neuman Fund

Nancy, Woody & Molly Ostrow Fund

Barbara & Lester Parker Fund for a Jewish Future

Andi & Zack Perelman BBYO Fund

Charles & Judith Perlow Fund ◆

Plung/Resnick Centennial Fund for a Jewish Future ◆

Nancy & Bill Rackoff Fund

Shoshana & Jerry Rosenberg

Scholarship Fund

Rudolph Family Fund ◆

Daniel & Barbara Shapira Fund for a

Jewish Future

David & Cynthia Shapira Centennial Fund for a Jewish Future ◆

Robert & Lori Shure CFJF Fund

Rhoda & Seymour Sikov Fund

Albert & Anita Smolover Fund

Edgar & Sandy Snyder Fund for a Jewish Future ◆

Andrew Stewart & Carole Bailey Fund for a Jewish Future

Temple Beth Israel of Steubenville, Ohio ◆

Alvin & Margaret Weinberg Milligram Memorial Scholarship Fund

◆ = indicates a Founder Level Commitment (\$250,000 or more)

ENDOWMENT FUNDS

The Jewish Community Foundation of the Jewish Federation of Greater Pittsburgh funds provide enduring financial resources that support special programs and projects not provided for through annual giving. Donors can designate specific purposes for Funds.

JEWISH FEDERATION OF GREATER PITTSBURGH

Board Designated

Adath Israel Congregation Fund

Dorothy Hast Blumenthal Fund

Care for the Aged Geriatric Fund

Henrietta Chotiner Jewish Education Fund

Sara S. Cohen Fund

Jacob & Mildred Davis Fund

Sara Fine Fund

Mulford C. Friedberg Fund

Louis & Shirley Goldman Fund #2
Jean, Lillian & Dr. Henry J. Goldstein
Fund
Manfred & Bella Heppenheimer Fund for
Elderly Services
Rosalind E. Levin Fund
Sylvan & Margaret Libson Fund
Rebecca Miller Educational Trust
Harry Palley Memorial Fund
Leslie Reggel Memorial Fund for UJF
Louis J. & Florence Reizenstein Fund
Fanny Pushin & Torrence Rosenberg
Memorial Fund
Nancy & Farrell Rubenstein Fund
Emanuel & Mary Spector Fund
Emanuel Spector Memorial Scholarship
Fund
Murray C. Thaw Memorial Fund
UJF Community Unrestricted Income
Fund
UJF Permanent Community Trust Fund
Arnold & Norma Wilner Anti-Semitism
Fund
Arnold & Norma Wilner Assistance Fund

Capital Funds

Falk Foundation Fund
General Fund
Frieda T. & Oliver M. Kaufmann

Meetings/Events

Max Bluestone Memorial Snowbird Fund
Henry & Lillian Goldstein UJF Annual
Meeting Fund
Ira & Nanette Gordon UJF Vanguard
Fund
Ivan J. & Natalie E. Novick Memorial
Fund

Missions

Martin Faberman Fund
UJF Missions Fund
Young Adult Mission Fund

Various

Louis B. Brody Family Fund
Milton & Sarita Eisner Solicitor Training
Fund
Louis & Shirley Goldman Fund
Bernard M. Halpern Memorial Fund
Edward N. & Jane Haskell for Creative
Projects
Burton L. & Ruth Hirsch Memorial Fund
Kneseth Israel Synagogue Fund
Edward J. & Ruth Nord Fund
Renaissance Legacy Fund
Rogalsky - Ringold Family Fund
Roslyn & Harvey B. Rosenblatt Family
Lawrence & Shirley Schneirov Fund
Sylvia & Herbert Schutzman Fund
Shalom Pittsburgh Operating Fund
Beatrice A. Silverman Fund
George & Violet Slesinger Memorial
Fund
Urban Affairs Foundation Fund

Isadore & Anna Verbofsky Fund
Samuel & Carrie Arnold Weinhaus
Memorial Fund
YAD Leadership Development Fund

BENEFICIARY AGENCY FUNDS

Agency for Jewish Learning

AJL Dr. Aharon Kessler Scholarship Fund
AJL/Amy Karp Adult Learning
Scholarship Fund
AJL-Florence Melton Adult Mini School
Fund
Joseph & Marjorie Allon Scholarship
Permanent Fund
Amos & Ethel Comay Fund for Jewish
Education
Sholom Comay Family Fund
Ethel Golomb Teacher Scholarship Fund
Gumerman Fund for the Agency for
Jewish Learning
Alan Papernick Educational Institute
Fund
Jeanne Rascoe Choral Music Fund

Community Day

Ronna & Dan Askin Fund
Harry & Jean Burstin Scholarship Fund
David & Esther F. Busis Memorial Fund
for Community Day
Capital Repairs - Community Day
Edith & Ben Casar Educational Fund
Community Day Grandparents Fund
Community Day School Fund
Emma Goldblum Fleegler Scholarship
Fund for Community Day School
Timothy Glick Israel Scholarship Fund
Ruth Gumerman CDS-SS Tuition Fund
Hyman Maretsky Community Day
School Scholarship Fund
Rita & Edward Perlow CDS-SS
Scholarship Fund
Adina Preis Fund for Community Day
Shirley & Albert Wein Scholarship Fund
Gary & Lois Weinstein Professional
Development Fund
Gary & Lois Weinstein Technology Fund

Hillel Academy

Capital Repairs - Hillel Academy
David & Rachele Gossat Fund
Hillel Academy/Cynthia & Ya'cov Abrams
Fund
Hillel Academy/Agudath Achim
Scholarship Fund
Hillel Academy of Pittsburgh Foundation
- Brent Boys School Fund
Hillel Academy/Butler Chessed Award
Fund
Hillel Academy/Donald & Chantze Butler
Fund
Hillel Academy/Environmental Fund
Hillel Academy of Pittsburgh Foundation
General Fund

Hillel Academy/Dallas H. & Samuel Shy
Goodman Scholarship Fund
Hillel Academy /Isadore Joshowitz Early
Childhood Center Fund
Hillel Academy of Pittsburgh
Foundation/Isadore Joshowitz
Memorial Fund
Hillel Academy of Pittsburgh
Foundation/Joshowitz Family Fund
Hillel Academy/Marshak Resource Room
Fund
Hillel Academy/Pollack Family Fund
Hillel Academy of Pittsburgh Foundation
Rottenberg Fund
Hillel Academy of Pittsburgh
Foundation/Marilyn Sindler Fund
Hillel Academy of Pittsburgh Foundation
Library Fund
Pauline & Hyman Milch Memorial Fund
UJF/Hillel Fund

Hillel Jewish University Center

Anna L. Caplan & Irene V. Caplan Hillel
JUC Passover Seder Fund
Dr. Solomon & Sarah Goldberg Hillel JUC
Shabbat Fund
Hillel JUC Sink Fund
Jewish University Center Fund
Stephen Kalson Memorial Fund
David & Hyman Schenker Fund
Solow Family Shabbat Fund

Holocaust Center of Greater Pittsburgh

Baran Survivor Fund for Holocaust
Center
Sidney & Sylvia Busis Library Fund for
the Holocaust
Morton Cieply Memorial Scholarship
Fund
Jack & Sara Gordon Holocaust Cultural
Fund
Manfred & Bella Heppenheimer
Holocaust Center Fund
Holocaust Center Fund
Holocaust Center Arts & Writing Fund
Holocaust Center ARSP Fund
Holocaust Center Educational Programs
Fund
Holocaust Center Exhibits Fund
Holocaust Center Friends Fund
Holocaust Center Kristallnacht Fund
Holocaust Center Library Fund
Holocaust Center Scholarship Fund
Holocaust Center Yom Hashoa Fund
Karen Rachel Hurwitz Memorial Fund
Curt & Lillian Levi Holocaust Fund
Sandra Levine Holocaust Education
Fund
Ernest & Sara Light Holocaust Memorial
Fund
Millstein Charitable Foundation Fund
Leora Rogal Memorial Fund

Silverman Fund for Holocaust Center
Jack Sittsamer Holocaust Fund for
Teacher Training
Dr. Irwin A. Solow Fund for Holocaust
Education
Ethel & Raymond Stept Memorial Fund
Earl R. Surloff Memorial Fund
Hal K. & Diane Waldman Holocaust Fund
Jacob Wolhendler Lectureship Fund for
the Holocaust Center of the UJF

Jewish Association on Aging

8 Over 80 Class of 2002 Fund
Capital Repairs - JAA-Weinberg Terrace
Capital Repairs - JAA-Weinberg Village
JAA/Sylvia B. Braun Fund
JAA Unrestricted Operating Fund
Mollie & Fred Kalson Memorial Fund
Riverview Center-Morris Trust Fund
Dr. Irwin A. Solow Fund for Health
Awareness Education
Sidney & Sadie Stark Memorial Fund

Jewish Community Center

Marlene Averbach Memorial Fund
JCC Beyond the Buildings Fund
JCC-Rosella & Gilbert Broff Fund
Capital Repairs - Jewish Community
Center
Herman & Rebecca Fineberg Fund for
Exceptional Children
Esther & Harold Garfinkel Family Fund
Benjamin & Jane Glass Fund
Adolph & Jack Goldsmith Fund
Rita J. Gould JCC Fund
Jewish Community Center Fund
Jewish Community Center Unrestricted
Fund
JCC-Joseph Kahn Memorial Fund
JCC/Oliver M. Kaufmann, Jr. Fund for
Young Children
JCC-Kossis Early Childhood Equipment
Replacement
JCC Orchestra Fund
Ostrow Family Israel Summer Camp
Fund
JCC-Mark Allen Robinson Day Care
Center Fund
JCC-Ruslander - Rogal Fund
JCC-Larry Ruttenberg Fund
Connie S. Sherman Music Scholarship
Peter Simsovcis Fund
Sandy & Edgar Snyder Israel Experience
Fund
Robert Spiegel Memorial Fund
B. C. Weiner & Marjorie Ash Weiner
Memorial Fund
Wolf Family-JCC Fund

Jewish Family & Children's Service

Marcella & Allan Apter Fund
Donna Askin Memorial Fund
Bickur Cholim Fund for JF&CS
Bickur Cholim Fund for JF&CS #2

Bickur Cholim Fund for JF&CS #3
JF&CS-Max & Charlotte Bluestone Fund
Sidney & Sylvia Busis JF&CS Fund
Capital Repairs - Jewish Family &
Children's Services
Belle & Robert Comins Fund for JF&CS
Cooper-Siegel Foundation/Squirrel Hill
Food Pantry Fund
Eve Arkin Cutler Fund #2
Nathan & Libby Elbaum Fund
Saul & Yetta H. Elinoff Family Kosher
SuperPantry
Jennifer & Jeffrey Finkelstein Fund for
the Squirrel Hill Food Pantry
Ethel Halpern JF&CS Fund
JF&CS-Edward N. Haskell Family Fund
for Creative Projects
Henry Family Fund for JF&CS
Jewish Family & Children's General Fund
JFCS/for Career Development
JFCS/for Senior Services
JFCS/Fund for Children
JFCS Permanent Restricted Campaign
Fund

JFCS/Charles E. Kaufman & Virginia
Kaufman Fund
JF&CS/Murray Klein Fund
JFCS/Mark Kottler Fund for Young
Adults
Belle G. & Arnold H. Lazarus Fund
Helen H. Levin Seniors Assistance Fund
JF&CS/Hilde Lowenstein Memorial Fund
JFCS/Dr. Howard A. Mermelstein
Memorial Fund
Reidbord/Spear Family Fund for Youth
at Risk
John W. & Shirley E. Richman
Foundation Fund
Stephen I. Richman & Audrey G.
Richman Foundation
Janet C. & Stanley A. Rosecrans Fund for
JF&CS
Dolores & Ralph Roskies Family Fund
to Support Individuals with Special
Needs
Gail & Arnold Ryave Community
Bereavement Support Fund
Sally & Ben Samuels Fund
JF&CS/Squirrel Hill Food Pantry Fund
Florence C. & I. D. Wolf Jr. Memorial
Fund for JF&CS
Jacob Wolhendler Fund for JF&CS

Jewish Residential Services

Harry & Beverly Friedman Fund
Jewish Residential Foundation Fund
Jewish Residential Foundation/Howard
Levin Clubhouse Fund
JRS/Lynne Ellen Robins Memorial Fund
Kathy & Larry Hurwitz Employment
Fund
Sally M. Levin Fund for Howard Levin
Clubhouse of Jewish Residential
Services

Burton & Marolee Pollock Fund

Riverview Towers

Elizabeth Finegold Fund
S. J. Hahn Memorial Fund
Max K. Markovitz Permanent Fund
Riverview Towers Fund
Riverview Towers Matching Funds Fund
Meyer H. Sivitz Religious Needs Fund for
Riverview Towers

Yeshiva Schools

Capital Repairs - Yeshiva Schools
Darrell H. & Helen K. Lazarus Scholarship
Fund
Ohav Zedek-Achei Tmimim Fund
Leonard H. & Doris G. Rudolph Family
Yeshiva Building Fund
Leonard & Doris Rudolph Yeshiva Fund
Saul/Herskovitz Fund
Dr. Irwin A. Solow Fund for Yeshiva
Schools
Yeshiva Achei Tmimim Fund

ISRAEL

General

Raffa & Paula Atlas Fund
Doris S. Balter Fund
Dr. Saul & Maude Boharas Fund
Ben Paul Brasley Israel Fund
Buncher Family Leadership Program
Fund
Children's Village Fund
Dream Network Fund
Jewish Lecture Fund: Socio-Economic
Policy in Israel
Abraham M. Levin Fund
Hershel & Marion Lamson Markovitz
Fund
Esther & Norman Mazerov Fund
Leslie Reggel Memorial Fund for UJF
Israel Project
Benjamin Ross Fund
Sderot Assistance Fund
David S. & Karen A. Shapira Fund
Irving Spolan Fund
Eileen, Sylvia & Howard Swartz Fund
Adele & Maurice Weiner-NA'AMAT USA
Fund
Health in Israel
Nancy Frank Memorial Fund
Pittsburgh Women's Health & Education
in Israel Fund

Scholarships

Burstein Family Scholarship Fund for
Israel Travel
Bernard Kaplan Israel Scholarship Fund
Albert, Selma & Ilse Levi Memorial
Scholarship Fund
Reidbord/Spear Family Scholarship
Fund
Benjamin Rifkin Memorial Fund
Bernard Silverman Scholarship Fund

JEWISH EDUCATION

Dr. Sidney & Sylvia Busis JESNA Fund
Glimcher Fellows Fund
Bernard Kaplan Memorial Intern Award Fund
Dr. Aharon Kessler Jewish Education Fund
Perlow Federation Jewish Education
Zalman & Evelyn Shapiro Fund for Orthodox Jewish Education
Silverman Family Fund
Tzadok Memorial Fund
Jacklyn & Arnold Wagner Bonding With Israel Fund
Louis & Sarah Weiner Scholarship Fund
Rabbi Joshua S. & Sara M. Weiss Education Fund
Albert D. Zecher Educational Fund of the Jewish Chronicle

JEWISH FAMILY

Interfaith Relations

Nancy Ostrow Fund
UJF for the Pittsburgh Theological Seminary

Jewish Children

Jonathan Reel Halpern Fund for Jewish Children & Seniors
J. M. Gusky Fund
Jewish Home for Babies & Children Fund
Harry E. Levine Family Fund
PJ Library Fund

Jewish Elderly

Jonathan Reel Halpern Fund for Jewish Children & Seniors
Barbara & Bud Mars Fund for Senior Adults
Raymond & Dorothy Sloan Memorial Fund

Teen Leadership

Samuel M. Goldston Teen Philanthropy Fund
Teen Philanthropy Alumni Fund

Various

Children's Aid Society of Jewish Women Fund
Irene & Andrew Aryeh Marchbein Memorial Fund
Edward A. Perlow & Rita F. Perlow Fund Shore/Whitehill Fund
Arnold & Norma Wilner Hunger/Preschool Fund

SCHOLARSHIPS

Alpha Epsilon Phi Pgh Alumnae Association Scholarship Fund
Sarah Barnblatt Scholarship Fund
Herbert I. Brody Scholarship Fund
Jack G. Buncher Scholarship Fund
Central Scholarship & Loan Referral Service Fund

Fanny Morris & Mary Echelman Scholarship Fund
Gladys Edelstein Memorial Scholarship Fund
Saul & Yetta Elinoff Scholarship Fund
Myrtle M. Fisher Scholarship Fund
Louis L. Friedman Fund
Herbert S. Green Memorial Scholarship Fund
Phyllis & Mayer A. Green Scholarship Fund
Mary Unikel Hedeman Scholarship Fund
Rosella B. Horvitz Scholarship Fund
JF&CS-Sarah & Tena Goldstein Memorial Fund
Hannah & Marvin Kamin Scholarship Fund
Edgar T. Keane Memorial Scholarship Fund
Louis & Dorothy Mallet Memorial Scholarship Fund
Benjamin & Ida Mann Memorial Scholarship Fund (2)
Dr. Bernard & Pauline Michaels Scholarship Fund
Bernard & Ravenna Palkovitz Miller Scholarship Fund
S. J. Noven Educational Fund for Needy Children
Phi Epsilon Pi Scholarship Fund
AZ & Fannie A. Pittler Memorial Scholarship Fund
Raizman Family Scholarship Fund
Morris & Nettie Rosen Scholarship Fund
Dr. Theodore B. Rosenthal Scholarship Fund
Moe & Sally Rubenstein Scholarship Fund
Bess & Meyer Silberstein Educational Fund
Anna Tisherman Memorial Scholarship Fund
UJF/Central Scholarship & Loan Referral Service Scholarship Fund

JEWISH COMMUNAL PROFESSIONALS

Jane R. Berkey Staff Enrichment Fund
Jacob Davis Lectureship Fund
Ira & Nanette Gordon Community Professional Achievement Award Fund
Jack A. & Bernice E. Meyers Fund for the Development of Volunteer Leaders in the PGH
Gerald S. Ostrow Community Leadership Award Fund
Howard & Tina Rieger Fund for Staff Development
Harvey & Carol Sloan Professional Development Fund
William & Olga Stark Fund
Irving A. & Jacquelin G. Wechsler Fund

OTHER ENDOWMENTS

Allen H. & Selma W. Berkman Fund
Albert W. Bloom Memorial Fund
Annie Busis Fund
Philip Chosky Private Foundation Fund
Leo H. & Merla Crip Medical Research Fund
Charles & Marcia Deaktor Fund
Sophie & Alexander (Samuel) Epstein Memorial Fund
Frederick N. Frank Fund
Dr. Michael A. Friedberg Memorial Fund
Adelaide Gerson Memorial Fund
Dr. Solomon & Sarah Goldberg Memorial Fund
Dora & Joseph Goldstein Memorial Fund
Richard L. Grinberg Memorial Fund
Alfred J. Halpern Fund
Julius Halpern Memorial Fund
Israel Lacrosse Fund
Anna L. Kann Memorial Fund
Judith Krug First Amendment Fund
Hilda Lebowitz Memorial Fund
Aaron & Sonia Levinson Community Relations Award Fund
Joseph Rattner Memorial Fund
Sanford N. Robinson, Sr. Memorial Lecture Fund
Leonard H. Rudolph Memorial Fund
Philip & Iris Samson Fund
Frieda G. & Saul F. Shapira Fund (2)
Simcha Fund for Teacher & Rabbinical Retention at Lubavitch Center of Pittsburgh & Yeshiva Schools of Pittsburgh
Emanuel & Mary Spector Fund #2
William & Olga Stark CAPA Fund
Charles M. Steiner Fund
Eugene & Ellen Sucov Fund
Faith Weinstein Book & Author Fund

AGENCY FUNDS

Hadassah

Nathan & Libby Elbaum Fund
Benjamin & Jane Glass Fund

Hebrew Free Loan Association

Max L. Blum Hebrew Free Loan Fund
Mark & Rose Browarsky Hebrew Free Loan Fund
Richard Max Davis Memorial Fund
Marjory S. Eiseman Memorial Hebrew Free Loan Fund
Irwin D. Wolf Jr. Memorial Fund

Jewish Assistance Fund

Jewish Assistance Fund
Belle G. & Arnold H. Lazarus for Jewish Assistance Fund
Shapiro Brothers Family Assistance Fund

Jewish Cemetery & Burial Association

Jewish Cemetery & Burial Association Fund
Jewish Cemetery & Burial - Beth Abraham Cemetery Fund
Jewish Cemetery & Burial Association - Machsikei Hadas Cemetery Fund
Jewish Cemetery & Burial Association/Shaare Zedeck Fund

Kollel Jewish Learning Center

Kollel/Jay & Leah Suldan Fund
Kollel/Ben Zimmer Scholarship Fund
Kollel Jewish Learning Centers Community Scholarship Fund

NA'AMAT USA

Jean L. Davis/NA'AMAT Fund
Gloria Elbling Gottlieb & Walter C. Gottlieb Na'Amat Youth Scholarship Fund
NA'AMAT USA Pittsburgh Council Fund

National Council of Jewish Women

Anniversary Fund
D. Balter Fund
M. Balter Fund
Caplan Fund
Ellovich Fund
Feldman Fund
Grotstein Fund
Guttman Fund
Krasik Fund
Kruman Family Fund
Libson Fund
Lieber Scholarship Fund
Mendelbaum Fund
Porter Scholarship Fund
Rosen Fund
Sklar Fund
Stem Fund
Strauss Fund
Student Aid Fund
Tauberg Fund
Whitman Fund
Williams Scholarship Fund

Rauh Jewish Archives

Buncher Company Fund for the Rauh Jewish Archives Fund
William M. Lowenstein Genealogic Research Fund
Rauh Jewish Archives Fund
Tibby & Saul Weisberg Fund

Zionist Organization of America

Pittsburgh Zionist District Inc. Fund
Zionist Organization of America-Pittsburgh Zionist of America District Fund
Patricia & Avraham Anouchi ZOA Scholarship Fund
Drs. Bernard & Esther Klionsky Fund at the ZOA

ZOA Ehrenwerth/Reidbord Fund
ZOA/Thelma Esman Fund
ZOA/Arthur & Marjorie Green Fund
ZOA/Ivan J. & Natalie E. Novick Scholarship Fund
ZOA/Harold Z. Scheinman Fund

Other Agency Funds

American Zionist Movement Fund
B'nai B'rith Youth Organization Scholarship Fund
J. Philip Bromberg Scholarship Fund
Loren R. Hirsch Memorial Fund
Israel Association of Baseball Fund
Jewish Federation of Ann Arbor
Jewish Women's Foundation
Ladies Hospital Aid Society Fund
Northern Israel Center for Arts & Technology
Dr. Harry Palkovitz Memorial Fund
State College Annual Campaign Local Fund
State College Annual Campaign Seniors Fund
State College Annual Campaign Youth Fund

SYNAGOGUES/ CONGREGATIONS

Adat Shalom

Adat Shalom Synagogue Fund
Adat Shalom/Beth Jacob Cemetery Perpetual Care Fund
Adat Shalom/B'nai Israel Cemetery Perpetual Care Fund
B'nai Israel Cemetery Fund

Beth El Congregation

Beth El Congregation Fund
Beth El Congregation Land Fund
Alexander Silverman Beth El Shemtov Award Fund

Congregation Beth Shalom

Congregation Cemetery Fund
Cemetery Restricted Fund
Reuben A. & Selma W. Cohen Fund
Harry & Jean Davis Fund
Designated Funds Fund
Congregation Beth Shalom Fund
Max Elinoff Youth Scholarship Fund
Oscar & Adeline Goldberg Fund
Lynda Herer Goldsmith Camp Ramah Scholarship Fund
Lillian & Leo Gross Sisterhood Keshet Fund
Ethelmarie & Bernard Halpern Young Leadership Fund
Lillian Halpern Memorial Lectureship Award Fund
Israel Experience Scholarship Fund
Betsy & Allan Kanarek Shabbat Alive Fund
Mark Lasser Memorial Scholarship Fund

Aaron & Bess Maharam Education Fund
Mazerov Scholarship Fund
Perpetual Planting Fund
Lynne Robins Memorial Scholarship Fund
Rose K. & Harry Rosen Confirmation Class Fund
Shear Youth Lounge Fund
Sigel-Mandel-Cohen Scholar in Residence Program
Steck Primary Enrichment Fund
Cantor Taube Fund
Wagner-Klein Preschool Playground Fund
Faye Rubenstein Weiss Fund
Zukerman Sukkah Fund
Joseph & Mildred Stern - Congregation Beth Shalom Junior Fund

Congregation Dor Hadash

Congregation Dor Hadash Fund
Gumerman Fund
Investment Fund
Leslie Reggel Fund
Religious School Scholarship Fund
Steger Fund
Nathan Witt Fund

Congregation Emanu-El Israel

Congregation Emanu-El Israel Fund
Joanie Brodell Alpern Memorial Fund
Building Development Campaign Fund
B'nai Israel Sisterhood Fund
Bob & Phyllis Davis Family Fund
Capital Fund
Education Fund
Fannie Millstein Memorial Fund
Alfred Ratner Library Fund
R.L. Wolinsky Memorial Fund
Ivan B. Young Educational Advancement Fund

Temple Sinai

Arthur J. & Betty F. Diskin Fund
Temple Sinai Fund
Temple Sinai Fund for the Future Fund
Temple Sinai Memorial Park Fund

Temple Beth Israel

Temple Beth Israel Fund
Steubenville B'nai Israel Louis Berkman Cemetery Fund

Tree of Life S'fard

Tree of Life S'fard Cemetery Fund
Tree of Life S'fard Fund

Other Synagogues/ Congregations

Adath Jeshurun Fund
Agudath Achim Hebrew Congregation of Beaver Falls, PA Cemetery Fund
Tina Rieger Shaare Torah Fund
Evelyn F. Schermer Memorial Fund
Congregation Shaaray Tefilah/ Kether Torah Fund

Temple Beth Am Cemetery Fund
Temple Emanuel of Greensburg
Cemetery
Eugene (Yochanon) Yudkovicz Memorial
Fund

UNRESTRICTED FUNDS

Laura Aaron Fund
Louis I. Aaron Memorial Fund
Adath Israel Sisterhood Fund
Julius Adler Memorial Fund
Jacob Affelder Memorial Fund
Benjamin Amdur Fund
Jacqueline & Alan Amper Fund
Simon J. Anathan Memorial Fund
Anonymous
Claire B. Arnheim Fund
Stanley W. Arnheim Memorial Fund
Harry Azen Fund
Michael & Sylvia Bachrach Fund
Sylvia Claster Bachrach Fund
Morris Baer Memorial Fund
Oscar & Marjorie Balter Memorial Fund
Pauline B. Bamberger Fund
Hugo Baum Memorial Fund
Alvina L. Beach Memorial Fund
Eleanor D. Benswanger Fund
Isadore & Tillie Berenfield Fund
Steven H. Berez Fund
Merle Berger Memorial Fund
Allen H. Berkman Memorial Fund
Lillian Berkofsky Fund
Sarah Wolf Bernstein Memorial Fund
Beth Israel Congregation of Allegheny
Fund
Albert W. Bloom Memorial Fund
Emma Bloom Memorial Fund
Isaac H. Bloom Fund
Israel C. Bloom Memorial Fund
Leonard Boreman Fund
Philip Braun Fund
Goldye F. Berman Fund
Leah Berman Fund
Joseph & Kitty Breskin Fund
Morris A. Breslau Fund
Joseph W. Broido Memorial Fund
Mark Brook Fund
Julia S. Brown Memorial Fund
Barbara Stern Burstin & David Burstin
Fund
David & Esther F. Busis Memorial Fund
Anna L. Caplan & Irene V. Caplan Fund
Jerry L. Caplan Fund
Esther Chianese Fund
Henrietta Chotiner Fund
Abraham R. Cohen Fund
Carrie Cohen Memorial Fund
Jacob & Rebecca Cohen Memorial Fund
Benjamin Eli & Ida Lazarowitz Cohen
Fund
Marcus Cohn Fund
Stella H. Cohen Fund
Barnett & Annie Davis Memorial Fund

David & Max Davis Fund
Jacob & Mildred Davis Fund
Jean L. Davis Fund
Maurice & Leona Davis Fund
Abraham J. DeRoy Memorial Fund
Isaac J. DeRoy Fund
Joseph DeRoy Fund
Louis J. DeRoy Memorial Fund
Marjory S. Eiseman Memorial Fund
Jane Epstine Memorial Fund
Charles Falk Memorial Fund
Leon Falk Sr. Fund
Sigmund Falk Fund
Albert Farber Fund
E. Lewis & Matilda Feldman Fund
Pearle C. Feldman Fund
Luisa Kaufman Finzi Fund
Marcella Finegold Fund
Lorraine S. Fisher Memorial Fund
Grace Fivars Fund
Louis Foster Fund
Ruth G. & Byron Foster Fund
Edgar K. Frank Memorial Fund
Florence & William K. Frank Memorial
Fund
I. W. Frank Memorial Fund
Lawrence W. Frank Memorial Fund
Pauline Frankel Fund
Sidney Freedman Fund
Mulford C. Friedberg Fund
Arthur & Marjorie Gatz Fund
Esther Garber Fund
Julia A. Gardner Fund
Marjorie Gatz Memorial Fund
Rose C. Gerber Memorial Fund
Gerald Ginsburg Fund
Louis Gluck Memorial Fund
Minnie Klein Goldberg Fund
Morris Goldberg Fund
Sarah M. Goldberg Fund
Fannie G. Goldsmith Fund
Mark Goldsmith Fund
Dora & Joseph Goldstein Memorial Fund
Dr. Henry J. Goldstein Fund
Jean Goldstein Fund
Lillian Goldstein Fund
Dallas Goodman Fund
Alice Goodstein Fund
Thomas C. Gordon Fund
Matthew B. Grant Fund
Arnold M. Green Trust Fund
Margaret Frank Green Fund
Ethel J. Greenberg Fund
Monroe Guttmann Fund
Esther Haas Fund
Ruby Patton Hadley Fund
Bernard Halpern Memorial Fund
George Halpern Memorial Fund
Beatrice F. Harris Fund
Milton E. & Ruth K. Harris Fund
Sylvan & Ann Haskell Fund
David Hast Fund
Morris J. Hecht Fund

Ruth K. Herscher Fund
Samuel Hertzberg Fund
Bertha C. Hoffrichter Fund
House of Shelter Fund
Albert & Ruth Isay Memorial Fund
Albert & Anna Jablonsky Fund
Jacob Jacobson Fund
Rosalyn Jacobson Fund
Sidney E. & Geraldine A. Jacobson Fund
N.P. & Evelyn J. Kann Memorial Fund
Stanley J. Kann II Fund
Naomi Kaplan Fund
Emanuela Kates Fund
Henry Kaufman Fund
Robert J. Kaufman Fund
Louis Kingsbaker Memorial Fund
William B. Klee Memorial Fund
Murray Klein Fund
Samuel Sandor Klein Fund
Lawrence & Sulamita Klotz Fund
Regina B. Kossman Fund
Bertha Kraus Fund
Herbert Krebs Fund
Mildred Krohn Fund
Irving Kuber Fund
Erna Landsberger Fund
Benjamin D. & Pearl Lazar Memorial
Fund
J. D. Lazar Fund
Hannah Lefkovits Fund
Anna L. Leifer Fund
Leo Lehman Memorial Fund
Mike Leebov Fund
Moses Lehman Memorial Fund
Vivian W. Lehman Fund
Joseph Lempert Fund
Leonard H. Levenson Fund
Nathan S. Levenson Fund
Bessie R. Levinson Memorial Fund
Samuel & Mildred Levinson Memorial
Fund
Yetta Levinson Fund
Elizabeth L. Levy Fund
Freda Lewis Fund
Harold J. Lewis Memorial Fund
Herman Lipsitz Fund
Louis Lipsitz Fund
Leonard Lipsky Fund
Hilde Lowenstein Memorial Fund
Irwin Luick Fund
Marion S. Mallinger Fund
Evelyn S. Marcus Memorial Fund
Harry Marcus Memorial Fund
Maurice Marcus Memorial Fund
Morris B. Marcus Memorial Fund
Marcia Markels Fund
Max K. Markovitz Fund
Harry & Stanley Mates Fund
Barney May Memorial Fund
Edwin C. May Memorial Fund
Walter S. Meyer Fund
Rose Miller Fund
Janet Mirow Fund

Robert M. Neubauer Fund
Edward Nord Memorial Fund
Morris Oseroff Memorial Fund
Gerald S. Ostrow Family Fund
Frances Hirschfield O'Toole Fund
Anna Rose Palkovitz Fund
Maurice Parker Memorial Fund
Carl Frederick Pehl Memorial Fund
Ethel Spiegel Perlman Memorial Fund
Stanley Perlman Fund
Charles I. Plesset Memorial Fund
Marvin R. Plesset Memorial Fund
Elizabeth R. Raphael Fund
Dr. Simon H. Ratner & Mildred Ratner Memorial Fund
A. L. Rauh Memorial Fund
Helen B. Rauh Memorial Fund
Rosalia Rauh Memorial Fund
Edward P. Reinhard Fund
Freda P. Reinhard Memorial Fund
Hyman Richman Fund
Leora Rogal Memorial Fund
Rogalsky/Ringold Family Fund
Nathan Rogow Fund
Abraham H. Rosenberg Fund
Solomon Rosenbloom Fund
Sara Rosenblum Memorial Fund
Celia Rosenthal Fund
Lillie B. & Eugene J. Ross Fund
Adolph J. Roth Memorial Fund
Harry Roth Fund
Alice M. Rothstein Memorial Fund
Joseph H. Ruben Fund
Boris Rubenstein Special Reserve Fund
Leonard H. Rudolph Memorial Fund
Stanley & Judy Ruskin Fund
S. Leo Ruslander Fund
Ethel R. Rutstein Fund
Anne Samuels Fund
K. I. Sanes Memorial Fund
Tom Schlesinger Memorial Fund
Ralph & Dorothy H. Schugar Fund
Herbert Schutzman Memorial Fund
Tom Schlesinger Fund
Isaac Seder Fund
Minnie Segelman Fund
Frieda G. & Saul F. Shapira Fund
Karen A. Shapira Fund
Louis Shapiro Fund
Lillian Sheffler Fund
Samuel Sherman Fund
Jennie S. Siemiensky Memorial Fund
Benjamin & Jean Siegal Fund
June Siegel Fund
William Silverman Memorial Fund
Peter Simsovs Fund
Ida Sissman Fund
George P. & Violet Slesinger Memorial Fund
Mollie Slutsky Memorial Fund
Kaskel Solomon Fund
Mendel E. Solomon Fund
Donald R. Solow Fund

Norman Solow Fund
Samuel, Fannie & Dr. Irwin A. Solow Fund
Gerald Soroker Fund
Joel Spear Fund
Marjorie Spector Memorial Fund
David Spiegel Fund
Sidney Stark, Sr. Memorial Fund
Julius B. Steinberg Memorial Fund
Libbie B. Steinsapir Memorial Fund
Dr. Raymond Stept Fund
Eugene B. Strassburger, Jr. Memorial Fund
Jane S. Strassburger Fund
Julia Strassburger Fund
Meyer Streng Fund
Else Sumbulivic Fund
Bennie N. Tisherman Fund
Benjamin & Elizabeth Trau Fund
Murray Thaw Memorial Fund
Isadore Verbofsky Fund
Harry J. Wagner Fund
Sheppard Wasbutsky Fund
Israel A. Wasser Memorial Fund
Ruth Weigle Fund
David Weinberger Fund
Lillian Weiner Fund
Elisabeth Welton Memorial Fund
Samuel Wertheimer Fund
Joseph N. Wiener Fund
Madelon R. Wildberg Fund
Norma W. Wilner Fund
Anna C. Wise Memorial Fund
Carrie F. Wolf Memorial Fund
Florence C. Wolf Memorial Fund
Jacob Wolf Fund
Sarah & Goldie Wolfe Memorial Fund
Bina B. Zeidman Fund
Lewis Zolbrod Memorial Fund

CHARITABLE TRUSTS

By establishing charitable trusts, donors can provide for charity and achieve substantial tax benefits for themselves and their beneficiaries. The following donors have established charitable trusts within the Foundation.

Anonymous
Alan L. & Barbara B. Ackerman
Harry & Carol D. Adelsheimer
Alber Family
Marcella Apter
Jane Berkey
Edward & Rose Berman
N. Barry Berman (2)
Max & Charlotte Bluestone
Gloria Bodek
Melvin J. & Rebecca N. Bodek (2)
Sidney N. & Sylvia A. Busis (2)
Connie Ceisler
Philip Chosky
Robert & Gene Dickman (2)
Libby Elbaum

Libby & Charles Elbaum
Libby Elbaum & Lenore Holt Willis
Sylvia Fischer
Harry & Beverly Friedman
Ruth Ganz
Harold & Esther Garfinkel
Simon & Francine Gelernter
Foster S. Goldman & Linda C. Goldman
Jack S. Goldsmith
Dr. Louis E. Goldszer
Ruth Godelman
Bella Heppenheimer
Linda Sue Kann (2)
Mina Kavaler
Anne Krieger
Ida Kubrick
Symoine Laufe
Florence Leebov
Frances Levin (3)
Sol & Ruth Levin
Jean Tenofsky May
Louise Mayo
Benjamin & Dorothy Melnick
Beverly Mermelstein
Sam Michaels
K. Sidney Neuman & Beth N. Bates
K. Sidney Neuman & Mollie Sue Neuman
K. Sidney Neuman & Cynthia N. Overbye
Marilyn F. Neuman & Beth N. Bates
Marilyn F. Neuman & Mollie Sue Neuman
Marilyn F. Neuman & Cynthia N. Overbye
Brad & Joanne Perelman
Hyman Richman (2)
Samuel & Sarabelle P. Rudick
Eleanor L. Schoenberger
Alexander S. & Rosalyn Silverman (2)
Joel Smalley
Albert & Anita Smolover
Robert & Lois Solomon
Sheila Solow
Yetta Speiser
Freda G. Spiegel
Alexander & Ethel Strasser
Mordecai & Sibyl Treblow
Lois Weaver
Morris & Claire Weinbaum Family
Weiner Family
Richard & Arlene Weisman
Esther Whitman
Charles & Elaine Wittlin
John M. Wolf Sr.
Sylvia Zelekovitz
Louis Zelekovitz

SUPPORTING FOUNDATIONS

A supporting foundation is a separate non-profit entity that coordinates its philanthropy and leadership with the Federation.

Meyer & Merle Berger Family Foundation Inc.
The Edward & Rose Berman Legacy Foundation
Jack G. Buncher Charitable Fund

PHILANTHROPIC FUNDS

To establish a philanthropic fund, the donor makes an irrevocable lifetime gift of cash or appreciated property, for which the donor receives a charitable tax deduction. In turn, the donor may make non-binding recommendations for distributions of the fund's income and/or principal to charitable organizations they wish to support.

Adelkoff Family Fund
Aligreza Charities Fund
ASKO Fund
Barry & Malori Asman Fund
Alan Balsam Fund
Howard & Elsie Balsam Fund
Deborah & David Baron Fund
Ahmie & Sara Baum Fund
Meyer & Merle Berger Fund
Sybiel Berkman Fund
Edward & Rose Berman Fund
Berman Kress Fund
Sanford S. & Patricia G. Berman Fund
N. Barry Berman Fund
Ellie K. Bernstein & Robert S. Bernstein Fund
Marcy Lynn Bernstein Fund
Todd L. Bernstein Fund
Bernstein-Hirschfield Fund
Harold & Betty Bigler Fund
Sara J. & Harry S. Binakonsky Fund
Blaufeld Family Fund
Lois & Sam Blaufeld Fund
Max & Charlotte Bluestone Fund
Eva Tansky Blum Fund
Alan D. & Marsha W. Bramowitz Fund
Daniel & Jennifer Brandeis Fund
William & Arlene Brandeis Fund
David & Nancy Brent Fund
Marc & Betsy Brown Fund
Burstin Family Fund
Burstin Memorial Fund
David Burstin Fund
Bennett Burstin Fund
Sidney N. & Sylvia A. Busis Fund
Dr. Paul S. & Gertrude F. Caplan Fund
Anna L. Caplan & Irene V. Caplan Fund
Casey Carruth-Hinchey Fund
Ceisler Family Fund
David & Micki Chatkin Fund
Kathryn & Jeffrey Cohan Fund
Benjamin Cohen Fund
Elizabeth Cohen Fund
Henry Cohen Fund
Jesse J. & Naomi G. Cohen Fund
Paige Cohen Fund
Stanley G. Cohen Fund
Deborah E. Comay Fund
Dr. Leo H. & Merla Crip Fund
Debel Fund
Deitch Fund
Robert C. & Gene B. Dickman Fund
Blaine Dinkin Fund

Arthur J. & Betty F. Diskin Fund
Hallie & Joshua Donner Fund
Drjags Charitable Fund
Brian Eglash Fund
Daniella Eglash Fund
Yonathan Eglash Fund
Sanford & Linda Ehrenreich Fund
Milton & Sarita Eisner Fund
Irving & Gloria Elbling Fund
Julian & Rhoda S. Eligator Fund
Tibey M. & Julian Falk Fund
Feinstein/Wolk Fund
Edythe & Arthur Fidel Fund
Joseph H. & Rose P. Field Fund
Fifth Avenya Fund
Edwin & Janet Finer Fund
Jeffrey H. & Jennifer Finkelstein Fund
Dr. & Mrs. Bernard Fisher Fund
Frank Family Fund
James A. & Ruth O. Frank Fund
Jack, Karen, Hillary & Max Friedman Fund
H. Arnold & Adrien B. Gefsky Fund
Martyn & Susan Gefsky Family Fund
Richard & Bonnie Gehl Fund
Gerber Family Fund
Harold M. & Jan S. Glick Fund
Robert I. Glimcher Fund
Goldberg Family Fund
Emily & Richard Goldberg Fund
Dr. Raymond & Bette Jean Goldblum Fund
Martin E. & Sally W. Goldhaber Fund
Ross Daniel Goldstein Fund
Bernard D. Goldstein & Russellyn S. Carruth Fund
Edward M. & Linda Leebov Goldston Fund
Goldszer Family Fund
Rita J. Gould Fund
Tracy Grandelis Fund
Abby & Edwin Grinberg Fund
Allen & Edith Grinberg Mitzvah Fund
Gross Family Fund
Howard S. Guttman Family Fund
Susan & Barney Guttman Fund
Halpern Family Fund
Lester A. Hamburg Fund
David & Shuelin Hammerstein Fund
Edward N. & Jane Haskell Fund
Daniel S. Heit Fund
Allen Hoffman Family Fund
Gertrude & Philip Hoffman Fund
Sidney & Maxine Hoffman Fund
Mark & Rhonda A. Horvitz Fund
Patty & Michael Hourvitz Fund
Alfred M. Hunt Memorial Fund
Melvin, Roslyn, Lee & Beverly Hurwitz Family Fund
Jennifer & Chad Jones Fund
Linda & James Josophowitz Fund
Michael & Janet Kamon Fund
N. P. & Evelyn J. Kann Memorial Fund

Fred & Victoria Kaplan Fund
Natalie & Larry Kaplan Fund
Thomas R. T. Kaplan Family Fund
Wendy Spector Kaplan Fund
Henry & Simone Karp Fund
Marshall P. Katz Fund
Robert M. & Ellen F. Katzen Fund
Matthew A. & Kristen M. Keller Family Fund
Michael & Atara Kentor Fund
Ellen Perlow Kessler Fund
Sydelle & Laibe Kessler Fund
Sibyl King Fund
Charles Kirshner Memorial Fund
Eugene J. & Ruth Ann Klein Fund
Seymour & Claire Klein Fund
Bernard L. & Esther W. Klionsky Fund
James & Carmen Kossis Fund
Kraus Family Fund
Seymoure & Corinne Krause Fund
David Kremen Fund
Anne & Louis Krieger Fund
Rebecca B. & Jeremy Z. Kronman Fund
Estelle & Jack Kruman Fund
Harriet & Julius Kruman Fund
Louis B. & Sandra R. Kushner Fund
Latterman-Sugerman Fund
Bernard B. & Rachel R. Latterman Fund
Steven A. & Dr. Leslie B. Latterman Fund
Florence & Mike Leebov Fund
Lehman-Epstone Fund
Jeffrey W. & Roberta R. Letwin Fund
Cecile Goldberg Levine Fund
Claire B. & Lawrence Levine Fund
Patti & Stanley Levine Fund
Shelly & Ellie Levine Fund
Barbara G. & Herbert I. Levit Fund
Sonia Jacobson LeWinter Memorial Fund
Barry Lhormer Fund
Susan & Richard Linzer Fund
Charles & Hilda Lipsman Fund
Robert & Marlene Litman Fund
Jack C. & Ruth London Fund
Robert M. Lumish M.D. & Sandra E. Lumish Fund
Sherry H. Malone Fund
Lyon & Ruth Mandelcorn Fund
David & Carole Maretsky Fund
Rabbi Isadore & Dr. Esther Marine Fund
Markel Family Fund
Jeffrey B. Markel & Carol L. Robinson Fund
Leslie M. Markel Fund
Richard J. Markel Fund
Max K. Markovitz Charitable Fund
Sheldon Marstine Fund
Andrea K. McCutcheon Fund
Jack A. & Bernice E. Meyers Fund
Milton & Lois Michaels Family Charitable Fund
Philip & Leah Milch Fund
Miljo Fund

Stanley & Flo Mae Moravitz Fund
 Donald I. & Janet Moritz Fund
 Bunny & Marvin Morris Fund
 Perry & BeeJee Morrison Fund
 Laurie Moser Fund
 J. Robert Myers Fund
 Sorel L. Myers Memorial Fund
 Leon & Edith Netzer Fund
 Marilyn & Casey Neuman Fund
 Dr. Bernard D. & Alison K. Newman Fund
 Linda & Stuart Nord Family Foundation
 Ivan J. Novick Fund
 Gerald S. Ostrow Family Fund
 Harry & Judy Palkovitz Fund
 Jack & Esther Y. Palkovitz Fund
 Barbara & Lester Parker Fund
 Richard & Suzanne Paul Fund
 Brad & Joanne Perelman Fund
 Sharon W. & Eric J. Perelman Fund
 Mark & Carina Perilman Fund
 Charles & Judy Perlow Fund
 Edward A. Perlow Trust
 Lori Perlow Fund
 Danielle Plung Fund for World Jewry
 Donald S. & Rose W. Plung Fund
 Jesse Plung Fund for World Jewry
 Stephen M. Plung Memorial Fund
 Burton & Marolee Pollock Fund
 Jeffrey Lawrence Pollock Fund
 Charles M. Porter & Hilary S. Tyson Fund
 Zell & Sheila Reicher Fund
 Reidbord/Spear Family Fund
 Rice Family Fund
 Emily Richman Fund
 Howard M. & Beverly Rieger Fund
 Howard M. & Tina S. Rieger Fund
 Donald & Sylvia Robinson Fund
 Stephen G. Robinson Fund
 George & Agnes Rocher Fund
 Alvin & Ann Rogal Fund
 Andrew L. & Vicki L. Rogal Fund
 Judith R. Roscow - Stephen D. Oliphant
 Fund
 Jan & Neil Rosen Fund
 Larry & Sandy Rosen Fund
 Richard & Ellaine Rosen Fund
 Herbert R. & Richard H. Rosenthal
 Memorial Fund
 Michael & Margaret Rosenzweig Fund
 Bob & Ruth Roteman Memorial Fund
 Ellen G. Roteman Fund
 Richard & Judith Rubinstein Fund
 Lara Goldstein Rudd Fund
 Rudolph Family Fund
 James & Louisa Rudolph Fund
 William C. & Lieba Rudolph Fund
 Stanley & Judy Ruskin Fund
 Martin & Ruth Sachnoff Family Fund
 Frank Saltzman Memorial Fund
 Sally & Sidney Santman Fund
 Allan B. & Ruth G. Schachter Fund
 Barton R. & Linda Schachter Fund
 Jonathan M. & Veronica C. Schmerling
 Fund

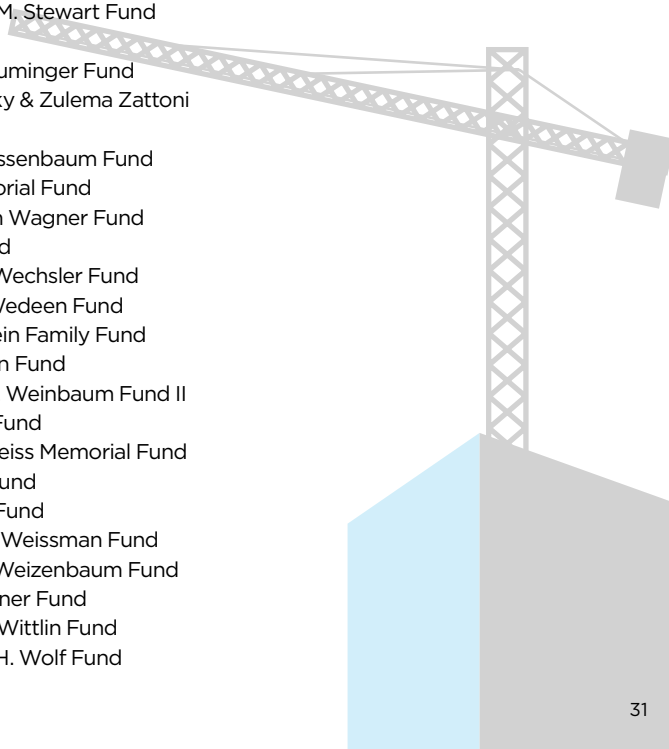
Brian Schreiber Fund
 Eve & Max Schwartz Fund
 Frank L. & Ruth R. Schwarz Fund
 Evan & Tracy Segal Fund
 Daniel & Barbara Shapira Fund
 Zalman & Evelyn Shapiro Fund
 Shelfry Fund
 Shiffman Family Fund
 Shure Family Fund
 Robert & Lori Shure Fund
 Rhoda & Seymour Sikov Fund
 The Silk & Stewart Fund
 Saul J. & Barbara S. Silver Fund
 Alexander & Rosalyn Silverman Fund
 Jerry T. & Marjorie K. Silverman Fund
 Bennett Silverman Fund
 Brian Silverman Fund
 Harvey & Jean B. Simon Fund
 Sindler Family Fund
 Thomas & Lynn Slamovits Fund
 Joel & Judy Smalley Fund
 Susan & Peter Smerd Fund
 Manny & Ileane Smith Fund
 Albert & Anita Smolover Fund
 Richard & Leslie Snow Fund
 Jordan P. Snyder Family Foundation
 Mervin A. Snyder Federation Fund
 Sandy & Edgar Snyder Fund
 William I. & Patricia S. Snyder Fund (2)
 Soffer Family Fund
 Barry B. Sokolow Fund
 Samuel, Fannie & Irwin A Solow Fund
 Arthur & Florita Sonnenklar Fund
 John S. & Janet C. Spear Fund
 Myrna & Joseph Stein Fund
 Steinbach Family Fund
 Charles & Rhoda Steiner Fund
 Michael & Hanna Steiner Fund
 Joseph & Mildred C. Stern Fund
 Andrew Stewart & Carole Bailey Fund
 Mervin S. & Marcia M. Stewart Fund
 Strichman Fund
 Moe B. & Carrie Struminger Fund
 Abraham Sudilovsky & Zulema Zattoni
 Fund
 Charlene & Allan Tissenbaum Fund
 Phyllis Unger Memorial Fund
 Arnold N. & Jacklyn Wagner Fund
 Lois S. Weaver Fund
 Irving & Jacquelin Wechsler Fund
 Marvin & Hannah Wedeen Fund
 Albert & Shirley Wein Family Fund
 Robert & Judy Wein Fund
 Morris J. & Claire M. Weinbaum Fund II
 Brenda Weinstein Fund
 Joseph & Esther Weiss Memorial Fund
 Malcolm S. Weiss Fund
 Harvey Weissman Fund
 Nancy F. & Michael Weissman Fund
 Norman & Marilyn Weizenbaum Fund
 David & Susan Werner Fund
 Charles E. & Elaine Wittlin Fund
 James H. & Nancy H. Wolf Fund

John & Leatrice Wolf Fund
 Michael & Barbara Wollman Fund
 Louis & Ruth Zeiden Fund
 David J. & Roberta T. Zeve Fund
 Lester E. & Ruth A. Zittrain Fund
 Zoffer Family Fund
 Jay Zytnick Family Fund

BEQUESTS

Burton Hirsch
 Helen Lipsitz
 Emerson Milligram
 Ernest L. Wimmer

Current as of September 13, 2013





SUPPLEMENTAL GIVING HONOR ROLL

While maintaining the primacy of the Annual Campaign and its focus on increasing the Foundation, the Federation also continues to develop its supplemental giving program. Supplemental giving is defined as donors contributing a significant financial commitment above and beyond their commitment to the Federation Annual Campaign.

Below we recognize donors who have made a minimum supplemental gift of \$10,000 and are currently donors to the 2013 Annual Campaign. The donors are listed based on the community priority area on which their commitment has had an impact.

AGING AND HUMAN NEEDS

Providing an easily accessible, high-quality, complete continuum of care for the aging, the financially and socially vulnerable and those with special needs.

Anonymous (4)
Philip Chosky Foundation
The Fine Foundation
Dr. Solomon and Sarah Goldberg Memorial Endowment Fund
The Moravitz Family
The Linda and Stuart Nord Family Foundation:
Jewish Family & Children's Service SOS Pittsburgh
The Sandy & Edgar Snyder Pittsburgh SOS Project
Shelly and Dan Snyder

JEWISH COMMUNITY LIFE/JEWISH LEARNING

Providing a vibrant, thriving Pittsburgh Jewish community that can sustain itself and grow into the next century with an abundance of programming and opportunities that engage people of all different ages and backgrounds effortlessly and meaningfully in Jewish life. Creating a community that offers the means to grow, live and learn Jewishly – at every stage of life and every level of affiliation.

Anonymous (8)
Marci Lynn Bernstein Philanthropic Fund
Ed and Rose Berman
David and Nancy Brent
Jack G. Buncher Charitable Fund
The Fine Foundation
Dr. Solomon and Sarah Goldberg Memorial Endowment Fund*
The Moravitz Family
The Linda and Stuart Nord Family Foundation: Jewish Community Center Scholarships*
One Happy Camper 2013: Papernick Family Foundation*
Sanford N. and Judith Robinson Foundation
Rudolph Family Philanthropic Fund*
Daniel & Barbara Shapira
David S. and Karen A. Shapira Endowment Fund
Shelly and Dan Snyder*
Lawrence and Rebecca Stern Family Foundation

* Represents a supplemental gift to the Centennial Fund for a Jewish Future

ISRAEL & WORLD JEWRY

Ensuring that community members have a personal connection to Israel and a shared sense of Jewish Peoplehood, both locally and globally, as well as addressing the social service needs of impoverished Jews around the world.

Anonymous (5)
Jack Buncher Foundation
Sidney N. & Sylvia A. Busis Philanthropic Fund
Philip Chosky Foundation
The Fine Foundation
The Moravitz Family
The Linda & Stuart Nord Family Foundation, Alon School & Garden Sderot, All in the Family
Akko, Victims of Terror Fund
Karen A. Shapira Endowment Fund
The Sandy & Edgar Snyder JDC Russia SOS Project
Charles Porter & Hilary Tyson
Phillip H. and Betty L. Wimmer Family Foundation



THE HISTORY OF THE TEAM
The team was founded in 1950
and has since become one of the
most successful in the state.

COACHES
Head Coach: [Name]
Assistant Coach: [Name]
Assistant Coach: [Name]

STAFF
Manager: [Name]
Trainer: [Name]

STAFF
Head Coach: [Name]
Assistant Coach: [Name]
Assistant Coach: [Name]
Trainer: [Name]
Manager: [Name]

CORPORATE DONORS AND SUPPORTERS

Corporate sponsorship dollars help offset costs of programs so that funds raised by the Federation can support much-needed social services in and around the community including efforts that feed the hungry, shelter and care for the elderly, counsel at-risk teens and families in crisis, and assist the unemployed.

Contributing to the Federation enables corporate donors to reach one of the most educated, influential and sophisticated consumer markets. It allows companies to enjoy visibility and exposure to donors via multimedia marketing and event-related benefits.

We are proud to recognize and thank the following corporate contributors. This list includes corporate donors that contributed \$1,000 or more and have permitted us to use their names.

CORPORATE DONORS

3 Rivers Ice Cream/The Freed Family
BNY Mellon
Citizens Bank Foundation
Dinsmore & Shohl LLP
Fragasso Financial Advisors
Giant Eagle Foundation
H Mak Inc.
Highmark Blue Cross Blue Shield
Huntington Bank
Kamin Realty Co.
Robert and Toni Mallet
McKnight Realty Partners
Midnight Blue Technology Services
Murray Avenue Kosher
Oxford Development Company
PNC Financial Services Group, Inc.
S&T Bank
Schneider Downs & Co., Inc.
Trau & Loevner
TWIN Capital Management, Inc.
UPMC
Wagner Agency, Inc.
Willis of Pennsylvania, Inc.

2012-2013 EITC DONORS

The following corporate donors have generously contributed \$3.6 million through the Pennsylvania Educational Improvement Tax Credit Program (EITC) in 2012-2013. This year, through this initiative, the Foundations provided 543 scholarships for children to attend Jewish day schools and pre-kindergarten programs in the Pittsburgh area.

ATI
Amazing Journeys, LLC
Atlas Materials Recycling Corporation
Bell Clippers, LLC, d/b/a Great Clips
CBRE, Inc.
Clean Care
Concast Metal Products Company
Cowden Associates, Inc.
Dollar Bank
First Capital Corporation
First Commonwealth Bank
First Niagra
Forest City Enterprises
Freid EI for Elmur II LP
GENCO
Guttman Group
HM Health Insurance Company d/b/a
Highmark Health Insurance Group
Huntington Bank
Impel Strategies, LLC
JKM Trading Company
Josh Steel Company, Inc.
Kenny Ross Automotive Group
LunaMetrics LLC
Marcus & Shapira LLP
McKnight Development Corporation
McKnight Realty Partners LLC
Midnight Blue Technology Services
Mine Safety Appliances Company
Nartak Media Group
Northwest Savings Bank
PNC Financial Services Group
S&T Bank
Saxon Uniform Network, Inc.
The Buncher Company
Town Development Inc.
Universal Health Services, Inc.
UPMC Health Plan

2013 AWARDS AND HONORS

EMANUEL SPECTOR MEMORIAL AWARD

BERNICE AND JACK MEYERS

The Spector Award is the highest honor presented by the Jewish Federation of Greater Pittsburgh. The Award is given for exemplary service to the community in a single year or over the course of many years.

DORIS AND LEONARD H. RUDOLPH JEWISH COMMUNAL PROFESSIONAL AWARD

MILO C. AVERBACH

The Rudolph Award recognizes the exceptional personal and professional commitment of a Jewish communal professional employed by the Federation or one of its partner agencies. The awardee is selected for his/her contribution to improving the quality of services offered in the community, and to the enhancement of Jewish life.

GERALD S. OSTROW VOLUNTEER OF THE YEAR AWARD

MAUREEN KELLY BUSIS

The Ostrow Award recognizes the special efforts of a volunteer leader who has dedicated significant service to the community and has fostered partnerships among the Federation and its agencies.

IRA AND NANETTE GORDON COMMUNITY PROFESSIONAL ACHIEVEMENT AWARD

RABBI SAM WEINBERG

To encourage talented new professionals in communal work to continue in this field, the Gordon Award was established to recognize a professional who, in the early years of his/her career, demonstrated outstanding service to the Jewish Federation, its beneficiary agencies and the Jewish community.

SONIA AND AARON LEVINSON COMMUNITY RELATIONS AWARD

DAVID AINSMAN

The Levinson Award recognizes the efforts of Jewish men and women who pursue the Jewish ideals of social justice and concern for all humankind. The awardee is selected for leadership in advancing intergroup relations and in eliminating prejudice and bigotry in our society.

PNC COMMUNITY BUILDERS AWARD

PLUNG FAMILY

PNC Community Builders Award recognizes a Jewish Federation leader or leaders whose volunteer efforts have resulted in building a stronger and more vibrant Greater Pittsburgh community.

WILLIAM AND OLGA STARK YOUNG LEADERSHIP AWARD

SCOTT E. TOBE

The Stark Award recognizes the achievements of an outstanding young leader who serves as a role model and exemplifies the ideals essential for the next generation of Jewish community leadership.

CAMPAIGNER OF THE YEAR AWARD

E.J. STRASSBURGER

The Campaigner of the Year Award was established to recognize the efforts of a volunteer or volunteers who work on behalf of the Annual Campaign and whose leadership serves as a role model for others.



Board of Directors

Members

MERYL K. AINSMAN
SUSAN G. BERMAN
DAVID BURSTIN
MAUREEN KELLY BUSIS
MILTON EISNER
NANCY ELMAN
KAREN WOLK FEINSTEIN
JEFFREY FREEDMAN
H. ARNOLD GEFSKY
GEOFFREY GERBER
PETER GORDON
MEYER (SKIP) GRINBERG
DAVID GRUBMAN
ALAN GUTTMAN
RABBI AMY HERTZ
EVAN INDIANER
MICHAEL (SHLOMO) JACOBS
DAVID J. KALSON
JUDITH KANAL
GERRI KAY
MATTHEW KELLER

ELLEN P. KESSLER
MACY KISILINSKY
EILEEN L. LANE
JEFFREY B. MARKEL
CHERYL MOORE
LAURIE MOSER
DOUGLAS (WOODY) OSTROW
CHARLES PERLOW
CHARLES PORTER
WILLIAM C. RUDOLPH
CAROLE MINER SCHUMAN
CYNTHIA D. SHAPIRA
BARBARA SHUMAN
LORI SHURE
EDGAR SNYDER
ANDREW STEWART
DAVID SUFRIN
HOWARD VALINSKY
JAMES P. WAGNER
GREGORY WEINGART

Past Chairs

BARBARA S. BURSTIN
DAVID BURSTIN
SIDNEY N. BUSIS
RICHARD E. KANN
GERALD S. OSTROW
DONALD M. ROBINSON

JAMES A. RUDOLPH
WILLIAM C. RUDOLPH
STANLEY C. RUSKIN
RUTH G. SCHACHTER
DANIEL H. SHAPIRA
DAVID S. SHAPIRA



Jewish Federation
OF GREATER PITTSBURGH



Jewish Federation
OF GREATER PITTSBURGH